



> PRINT

ECOSYS P2235dn
ECOSYS P2235dw
ECOSYS P2040dn
ECOSYS P2040dw

> PRINT > COPY > SCAN

ECOSYS M2135dn
ECOSYS M2040dn

> PRINT > COPY > SCAN > FAX

ECOSYS M2635dn
ECOSYS M2635dw
ECOSYS M2735dw
ECOSYS M2540dn
ECOSYS M2540dw
ECOSYS M2640idw

Printer Driver User Guide



Legal Notes

Unauthorized reproduction of all or part of this guide is prohibited.

The information in this guide is subject to change without notice.

We cannot be held liable for any problems arising from the use of this product, regardless of the information herein.

Regarding Trademarks

Microsoft®, Windows®, Internet Explorer®, Windows Vista®, and Windows Server® are registered trademarks of Microsoft Corporation in the U.S. and/or other countries. KPD L is a trademark of Kyocera Corporation. PCL® is a trademark of Hewlett-Packard Company. TrueType® and Mac OS® are registered trademark of Apple Inc. Adobe®, Acrobat®, Adobe Reader®, Photoshop® and PostScript® are trademarks of Adobe Systems, Incorporated. All other brand and product names herein are registered trademarks or trademarks of their respective companies.

Examples of the operations given in this guide support the Windows 7 printing environment. Essentially the same operations are used for Microsoft Windows 10, Windows 8.1, Windows 8, Windows Vista, Windows XP, Windows Server 2012 R2, Windows Server 2012, Windows Server 2008 R2, Windows Server 2008, and Windows Server 2003 environments.

User interface screen captures shown in this guide may differ depending on your printing device.

This user guide and its contents were developed for the 6.3 driver.

Table of Contents

Chapter 1 Installation

The Driver	1-1
Preparing to Install the Driver	1-1
Resource and Energy Saving	1-2
Communication Settings	1-2
Specifying Communication Settings	1-2
Express Install	1-2
Installing with Express Install	1-3
Custom Install	1-4
Installing with Custom Install	1-4
Installing Utilities Only	1-6
Editing Driver Properties	1-6
Editing Utility Properties	1-7
Upgrade	1-8
Upgrading Driver Components	1-8
Maintenance	1-8
Optional Printer Components	1-8
Documents	1-9
Uninstall	1-9
Uninstalling Driver Components	1-9
Printer Driver Settings Access	1-10
Changing the Default Driver Settings	1-10

Chapter 2 Driver Overview

Overview Images	2-1
Selecting a PDL in Printing Preferences	2-2
Settings List	2-2
Print Preview	2-2
Previewing a Print Job	2-3
Kyocera Logo	2-3
Displaying Version Information	2-3
Displaying Plug-in Information	2-3

Chapter 3 Device Settings

Accessing Device Settings	3-1
Device Options	3-1
Setting Device Options	3-1
Auto Configure	3-2
Enabling Auto Configuration	3-2
Memory	3-2
Setting the Memory	3-3
RAM Disk	3-3
Setting RAM Disk	3-3
Administrator Settings	3-3
General	3-3

Show Quick Print Tab	3-3
Send Count Information	3-4
Send Application Name	3-4
Associate Profile with Application	3-4
Password Protect Administrator Settings	3-4
Hide Factory Default Profile	3-5
Hide Lower Pane	3-5
SNMP Settings	3-5
SNMPv3 Options	3-6
Job E-mail Notification	3-7
Selecting E-mail Notification Options	3-7
Lock Settings	3-7
Lock Settings Options	3-7
Locking Driver Settings	3-8
User Login	3-8
User Login Options	3-9
Printing with User Login	3-9
Job Accounting	3-10
Job Accounting Options	3-10
Adding or Editing an Account ID	3-11
Printing with Job Accounting	3-12
Net Manager	3-12
Selecting Net Manager Options	3-13
Printing with Net Manager	3-13
User Settings	3-14
Identification	3-14
Units	3-14
Language Preference	3-15
Page Description Languages (PDL)	3-15
PDL Options	3-15
PDF	3-17
PDF Options	3-18
XPS Driver	3-19
XPS Options	3-19
Compatibility Settings	3-20
Media Source Enumeration	3-20
Ignore Application Collation	3-21
Combine Source and Media Type Lists	3-21
Removing a Plug-in	3-21

Chapter 4 Quick Print

Quick Print Options	4-1
Orientation	4-1
Collate	4-2
Duplex	4-2
Pages per Sheet	4-2
EcoPrint	4-3
Edit Quick Print Options	4-3
Selecting Quick Print Options	4-3
Profiles	4-4
Selecting a Profile	4-4
Saving a Profile	4-4
Editing a Profile	4-5
Deleting a Profile	4-5
Importing a Profile	4-6
Exporting a Profile	4-6

Application Based Printing	4-6
----------------------------------	-----

Chapter 5 Basic

Print Size	5-1
Page Sizes	5-1
Creating a Custom Page Size	5-2
Deleting a Custom Page Size	5-2
Printing with Custom Size Pages	5-2
Media Type	5-2
Source	5-3
Destination	5-3
Copies	5-3
Carbon Copies	5-3
Printing Carbon Copies	5-4
Collate	5-4
Printing Collated Documents	5-4
Orientation	5-5
Duplex Printing	5-5
Printing in Duplex Mode	5-6
EcoPrint	5-6
Selecting EcoPrint	5-6

Chapter 6 Layout

Multiple Pages per Sheet	6-1
Printing Multiple Pages per Sheet	6-1
Scaling	6-2
Setting Scaling on the Page	6-2
Gutter	6-2
Creating a Gutter	6-2
Poster	6-3
Printing a Poster	6-4
Booklet	6-4
Printing a Booklet	6-4

Chapter 7 Imaging

Print Quality and Custom Quality	7-1
Print Quality Selection	7-1
Selecting Print Quality	7-2
Font Settings	7-2
Font Settings Options	7-2
Selecting Font Settings	7-3
Setting Font Substitution	7-3
Disabling Device Fonts	7-4
Graphics Settings	7-4
Pattern Scaling	7-4
Line Thinning	7-5
Inversion Options	7-5
Optimization	7-5
CIE Option	7-6
Halftone Screen	7-6
Half Speed Mode	7-7
EcoPrint	7-7
Selecting EcoPrint	7-7
Black and White Adjustment	7-7
Adjusting Black and White Settings	7-7

Text and Graphics Effects	7-8
---------------------------------	-----

Chapter 8 Publishing

Cover Mode	8-1
Cover Mode Options	8-2
Printing Covers	8-4
Transparency Interleaving	8-5
Inserting Backing Sheets Between Transparencies	8-5
Page Insert	8-5
Page Insertion Options	8-6
Printing Page Inserts	8-7
Chapter Page Insert	8-7
Printing with Chapter Page Insert	8-7

Chapter 9 Job

Job Storage (e-MPS)	9-1
Job Storage (e-MPS) options	9-2
Quick Copy	9-2
Printing a Quick Copy Job	9-2
Proof and Hold	9-3
Printing a Proof and Hold Job	9-3
Private Print	9-3
Storing a Private Print Job	9-4
Job Storage	9-4
Storing a Job Storage Job	9-5
User Login	9-5
Printing with User Login	9-5
Job Accounting	9-5
Printing with Job Accounting	9-5
Job Name	9-6
Don't Use Application Name	9-6
Overwrite Job Name	9-6
Selecting a Job Name	9-6

Chapter 10 Advanced

Prologue/Epilogue	10-1
Insertion Point Options	10-2
Selecting and Assigning a Prologue/Epilogue File	10-2
Editing a Prologue/Epilogue File	10-3
Deleting a Prologue/Epilogue File	10-3
Watermark	10-3
Adding or Editing Watermark Text	10-4
Adding or Editing a Watermark Image	10-5
Security Watermark	10-6
Adding or Editing a Security Watermark	10-6
Status Monitor Notification	10-8
Setting Status Monitor Notification	10-8
Viewing Status Monitor	10-9
EMF Spooling	10-9
Selecting EMF Spooling	10-10
Enable Client Profile	10-10

1 Installation

A printer driver is an application that manages communication between a printer and your computer.

Once installed, the printer driver settings must be configured in the printer **Properties** and **Printing Preferences**.

In the **Product Library** window, there are two methods of installation. **Express Install** is a quick way to install a driver and certain features in package form. With **Custom Install**, you select from individual drivers and utilities.

With **Upgrade** you can update the driver and utilities to a newer version. This feature is only available if there is a product that needs to be upgraded. In a client/server environment, you cannot upgrade older drivers. Contact your printing system dealer for more information.

With **Maintenance** you can run certain utilities. You can access release notes, the printing system operation guide, and other materials by selecting **Documents**. With **Uninstall**, you can remove drivers and utilities.

Note: In Windows operating systems, you must be logged in with administrator rights to install the printer driver.

The Driver

In Windows 10, Windows 8.1, Windows Server 2012 R2, Windows 8, Windows Server 2012, Windows 7, Windows Server 2008 R2, Windows Vista, and Windows Server 2008 with a USB connection, you can install a driver from the Microsoft Windows Update site if a certified driver is available and the system is connected to the web.

We recommend you continue to install the driver from the supplied installation disk for an expanded feature set. In Windows, if the **Found New Hardware Wizard** dialog box appears during the installation process, click **Cancel**. If the **Hardware Installation** warning dialog box appears, click **Continue Anyway**.

Preparing to Install the Driver

- 1 Turn on the computer and the printer.
- 2 Insert the **Product Library** disk into the disk drive. The application should start automatically.

Note: If the **Product Library** fails to start after inserting it into the disk drive, use Windows Explorer to locate **Setup.exe** on the local drive and double-click to open.

- 3 To proceed, read and accept the license agreement that appears.

- 4 At the bottom of the **Product Library** window, select your language from the list.

Resource and Energy Saving

Printing on both sides of a sheet of paper (duplex mode) reduces paper consumption and helps conserve environmental resources. Duplex mode also lowers costs by reducing the amount of paper that must be purchased. We recommend that printing systems capable of duplex printing use duplex mode by default.

After clicking **Accept** in the license dialog box, depending on your region, a message about resource and energy conservation may appear. Read the message, and then click **OK**.

After installation is successful, **Set Duplex as default** appears and is selected on the **Finished** page. The driver is set to duplex mode by default.

You can make exceptions to the default later by selecting options in the driver **Quick Print** or **Basic** tabs.

Communication Settings

With the **Communication Settings** icon, you can specify an SNMP **Read community name** that is used during device discovery. This name is like a password for SNMP communication. The default name is **public**. An administrator can require a more restricted name. If a discovery is in process, or at least one discovery device has been added to the **Products to Install** list, the **Communication Settings** icon is unavailable.

Specifying Communication Settings

- 1 In the **Product Library** window, click **Express Install** or **Custom Install**.
- 2 Under the **Device** box, click the **Communication Settings** icon.
- 3 In the **Product Library** dialog box, type a name in the text box. You can click **Reset to Default** if you want to return the default name (**public**) to the text box.
- 4 Click **OK**.

Note: If you entered a different **Read community name**, the **Devices** list is cleared. Click the circular arrow **Refresh** icon to rediscover devices.

Express Install

Express Install refers to quick device, driver, and utility installation for a USB or network connection in Windows operating systems. The installation application discovers printing devices that are turned on, and connected by USB or network cable. One or more feature packages can be installed together.

If the installer cannot find your printing system, contact your system administrator.

Note: You must install **.NET Framework 4.0** or later to use **Status Monitor**.

Installing with Express Install

- 1 Ensure that your printing system and computer are turned on and connected by USB or network cable.
- 2 In **Express Install**, the installer looks for your printing system. Each discovered device is displayed in the device list as an icon with a model name and port name.

If your device is discovered, select your model in the device list.

If discovery does not find your device, remove and reinsert the USB or network cable, and ensure that it is connected properly. Click the circular arrow icon to refresh the discovery.
- 3 You can also find a device by typing a partial or full search term in the search text box above the device list. You can search the discovered devices by model name, IP address, or USB port. The results are displayed in the device list. If the search finds your device, select it. Click the x icon to clear the text box, and return to the list of all discovered devices.
- 4 You can select **Use host name as port name** to use a host name for the Standard TCP/IP port. (Not available with a USB connection.)
- 5 The installer automatically selects all the features in the feature list. You can select or clear any check box for individual features.
- 6 Review your settings. At least one device and one feature must be selected to enable the **Install** button. If your settings are correct, click **Install**.
- 7 When the installation completes successfully, on the **Finished** page you can select from the following options. These options only appear after a printer driver installation.

Print a test page

Select the check box to test the connection and operation of the printing system. If the installation is successful, the *Windows Printer Test Page*, containing your computer name and information on your printer driver and port settings, prints at the newly installed printing system.

Device Settings

Select the check box to open **Device Settings** where you can choose installed options for your printing system. (The **Device Settings** check box appears only in Windows XP with a network connection.)

Set Duplex as default

After installation is successful, depending on your country, **Set Duplex as default** appears and is selected on the **Finished** page. The driver is set to a default duplex mode. Exceptions to the default can be made afterward by selecting options in the driver **Quick Print** or **Basic** tabs.

Enable event notification

Select the check box to enable event notification in the **Status Monitor Notification** dialog box. The **Status Monitor Notification** dialog box appears after clicking **Status Monitor** on the **Advanced** tab.

Show Quick Print tab

With **Quick Print** you can define basic print options into group profiles that can be accessed easily. The **Show Quick Print tab** option also appears in **Device Settings > Administrator > General**.

Click the plus sign to expand the list of options:

The **Set Quick Print tab as default** option makes the **Quick Print** tab the first tab you see when you open the driver.

The **Set Basic tab as default** option makes the **Basic** tab the first tab you see when you open the driver.

The **Hide other tabs** option makes the **Quick Print** tab the only tab in the driver.

8 To exit the installer application, click **Finish**.

A message may appear if there is a software installation failure. After clicking **Finish**, retry the installation. If the same message appears again, contact your system administrator.

The installation of the printing system is now complete. If prompted, restart your computer.

Custom Install

Custom Install refers to detailed device, driver, and utility installation for a USB or network connection in Windows operating systems. The installer can discover devices that are turned on, and connected by USB or network cable, or you can manually select your own printing system model and port name.

When you make a selection in **Custom Install**, it is highlighted with a blue background. You can install more than one product from the **Devices** list, but they must be selected and moved to the **Products to Install** list.

You can also install utilities without printing systems or drivers by selecting the **Utilities** tab on the **Custom Install** dialog box. You can select the utilities you want from the **Name** list and move it to the **Products to Install** list.

In Windows 10, Windows 8.1, Windows 8, Windows 7, Windows Vista, Windows Server 2008, Windows Server 2008 R2, Windows Server 2012 and Windows Server 2012 R2 only, the XML Paper Specification (**XPS**) driver provides the most efficient method for displaying, processing, and printing documents.

If the installer cannot find your printing system, contact your system administrator.

Note: You must install .NET Framework 4.0 or later to use **Status Monitor**.

Installing with Custom Install

- 1** Ensure that your printing system and computer are turned on and connected by USB or network cable.
- 2** In the **Product Library** window, click **Custom Install**.
To discover a printing system, proceed to step 3. To add a printing system model and port name, proceed to step 5.
- 3** In the **Custom Install** window, the installer searches for your printing device. Each discovered printing system is displayed in the **Devices** list as an icon with a model name and port name. If your printing device is not discovered, proceed to step 5.

- 4 Select a printing device from the **Devices** list, and click the arrow to move it to the **Products to Install** list. Proceed to step 6.
- 5 If discovery does not find your printing device, you can add it. Click the **Add custom device** icon.
In the **Devices** dialog box, select from the **Model** list of supported models, and the **Port name** list of all local and network ports. To add a port connected to your system, click **Add Port**. Click **OK** in the **Devices** dialog box. The printing device appears in the **Products to Install** list.
- 6 Select a driver from the **Drivers** tab, and click the arrow to move it to the **Products to Install** list. One or more drivers are required to enable the **Install** button.
- 7 Select a utility from the **Utilities** tab, and click the arrow to move it to the **Products to Install** list. If a more recent version of a utility is installed, the utility shows a message that a newer version is installed.
- 8 If you want to remove a product from the **Products to Install** list, select it and click **Delete**. To remove all products, click the **Remove all** icon at the bottom of the list box.
- 9 You can select **Use host name as port name** to use a host name for the Standard TCP/IP port. (Not available with a USB connection.)
- 10 For each printing device and driver combination in the **Products to Install** list, you can click **Edit** to open a dialog box with installation options for the drivers. Make your selections from the available options.
- 11 Review your settings. At least one printing system, driver, or a utility, must be selected to enable the **Install** button. If your settings are correct, click **Install**.
- 12 When the installation completes successfully, on the **Finished** page you can select from the following options. These options only appear after a printer driver installation.

Print a test page

Select the check box to test the connection and operation of the printing system. If the installation is successful, the *Windows Printer Test Page*, containing your computer name and information on your printer driver and port settings, prints at the newly installed printing system.

Device Settings

Select the check box to open **Device Settings** where you can choose installed options for your printing system. (The **Device Settings** check box appears only in Windows XP with a network connection.)

Set Duplex as default

After installation is successful, depending on your country, **Set Duplex as default** appears and is selected on the **Finished** page. The driver is set to duplex mode by default.

You can make exceptions to the default later by selecting options in the driver **Quick Print** or **Basic** tabs.

Enable event notification

Select the check box to enable event notification in the **Status Monitor Notification** dialog box. The **Status Monitor Notification** dialog box appears after clicking **Status Monitor** on the **Advanced** tab.

Show Quick Print tab

With **Quick Print** you can define basic print options into group profiles that can be accessed easily. The **Show Quick Print tab** option also appears in **Device Settings > Administrator > General**.

Click the plus sign to expand the list of options:

The **Set Quick Print tab as default** option makes the **Quick Print** tab the first tab you see when you open the driver.

The **Set Basic tab as default** option makes the **Basic** tab the first tab you see when you open the driver.

The **Hide other tabs** option makes the **Quick Print** tab the only tab in the driver.

13 To exit the installer application, click **Finish**.

A message may appear if there is a software installation failure. After clicking **Finish**, retry the installation. If the same message appears again, contact your system administrator.

The installation of the printing system is now complete. If prompted, restart your computer.

Installing Utilities Only

1 In the **Product Library** window, click **Custom Install**.

2 Select a utility from the **Utilities** tab, and click the arrow to move it to the **Products to Install** list. If a more recent version of a utility is installed, the utility shows a message that a newer version is installed.

3 If you want to remove a product from the **Products to Install** list, select it and click **Delete**. To remove all products, click the **Remove all** icon at the bottom of the list.

4 Review your settings. At least one utility must be selected to enable the **Install** button. If your settings are correct, click **Install**.

5 To exit the installer application, click **Finish**.

A message may appear if there is a software installation failure. After clicking **Finish**, retry the installation. If the same message appears again, contact your system administrator.

The installation of the utilities are now complete. If prompted, restart your computer.

Editing Driver Properties

1 In the **Product Library** window, click **Custom Install**.

- 2 In the **Devices** list, select a device and click the arrow to move it to the **Products to Install** list.
- 3 In the **Drivers** list, select a driver and click the arrow to move it to the **Products to Install** list.
- 4 In the **Products to Install** list, click **Edit** in one of the devices.
- 5 The **Device** dialog box opens and shows the model name and the IP address or USB. If there are multiple drivers, the settings for each driver are separated into tabs. Select the tab of the driver you want to configure. For every assigned driver, the following driver properties appear:
 - Printer name**
Enter a name for the device to a maximum of 63 characters.
 - Share the printer**
Select this option to share this printing system with others. If selected, enter a **Share name** for the printing system to a maximum of 63 characters.
 - Set as default printer**
Select this option to send most or all of your print jobs to this printing device.
- 6 Click **OK**.

Editing Utility Properties

- 1 In the **Product Library** window, click **Custom Install**.
- 2 In the **Utilities** tab, select **KYOCERA Net Viewer** and click the arrow to move it to the **Products to Install** list.
- 3 In the **Products to Install** list, click **Edit** in the **KYOCERA Net Viewer** utility product.
- 4 A dialog box opens to show the utility options. Make your selections.
 - KYOCERA Net Viewer**
 - Device management**
Finds devices and manages device settings.
 - Accounting management**
Establishes accounts for device groups and manages the account settings.
 - Host management**
Manages printer drivers and print queues.
- 5 Click **OK**.

Upgrade

The installer can detect outdated driver or utility components on your computer. You can select driver or utility components and upgrade them to the most recent version. If there are upgrades available, a list appears when you click **Upgrade**.

In a client/server environment, you cannot upgrade older drivers. Contact your printing system dealer for more information.

Upgrading Driver Components

- 1 In the **Product Library** window, click **Upgrade**.
- 2 From the **Upgrade** list, select the drivers and utilities to upgrade on your computer.
- 3 To start the upgrade, click the **Upgrade** button.
- 4 In the **Finished** dialog box, click **Finish**.

Maintenance

With **Maintenance**, you can access utilities that provide useful features. Select and run any of the available utilities:

Optional Printer Components

You can expand functionality with Help modules in other languages, common printer profiles, plug-in modules, and the **Net Manager** application.

Quick Network Setup

You can configure the most common networking settings.

Maintenance Menu

You can adjust features such as print position and scan position.

Configuration Tool

You can modify the printing system's factory default settings.

Wi-Fi Setup Tool

You can configure the Wi-Fi settings.

Optional Printer Components

You can expand the functionality of your printer driver by installing optional components.

For the XPS driver, only **Common Profiles** and **Help Modules** can be installed.

Installing Optional Printer Components

- 1 Click **Maintenance**.
- 2 Select **Optional Printer Components** and click **Run**.
- 3 On the **Select Printer** page, select one or more printing systems and click **Next**. On any page you can click **Back** to correct any settings.

- 4** On the **Select Components** page, click the plus sign icons to expand options. Click each option to open a dialog box with more detailed selections.
Under **Common components**, you can select Help modules in additional languages.
- 5** Under each printing system model, you can select one or more common profiles of predefined print settings.
- 6** Under each printing system model, you can select one or more plug-in modules.
Output to PDF
With this option, you can print and save documents from multiple sources to PDF.
Security Watermark
With this option, you can print a nearly invisible image or text against a background pattern. The security watermark appears only when the printed page is photocopied.
- 7** Under each printing system model, you can select **Net Manager**.
- 8** When your settings are correct, click **Install**.
- 9** When the **Printer Components Installation Completed** page appears, click **Finish**.
When you have completed installing printers and optional components, if prompted, restart your computer.

Documents

With **Documents**, you can access guides about the driver, utilities, and printing system operation. Select and open any of the available files. Acrobat Reader 8.0 or newer is required to view PDF files.

Uninstall

The uninstaller can find the printing system drivers on your local drive. It creates a list of those components in the **Uninstall** window. If you uninstall a driver, devices using that driver will also be removed.

Uninstalling Driver Components

- 1** In the **Product Library** window, click **Uninstall**.
- 2** Select components from the list to uninstall. Select by device model, or click the plus sign to expand a list of individual devices. Above the list, you can also use the **Select all** check box to select or clear all items.
- 3** To start the uninstall, click the **Uninstall** button.
- 4** In the **Finished** dialog box, click **Finish**.

Printer Driver Settings Access

The printer driver software can be accessed from the **Print** dialog box of an application, or from **Start**. If accessed from an application, then changes made to driver settings remain in effect until the application ends. If accessed from **Start**, changes are maintained as the default printer settings.

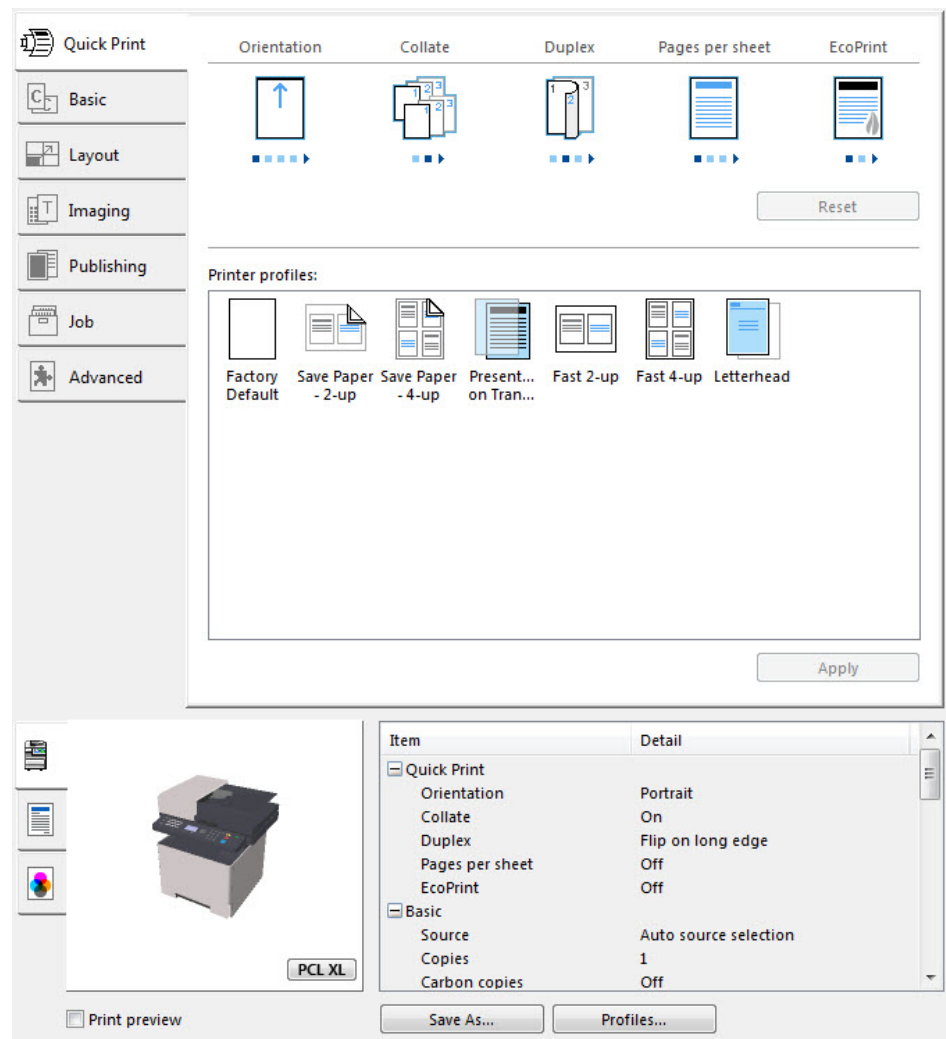
Changing the Default Driver Settings

- 1** Depending on your operating system:
 - Windows 10, Windows 8.1, and Windows Server 2012 R2: right-click **Start** > **Control Panel** > **View devices and printers**.
 - Windows 8 and Windows Server 2012: open **Control Panel** > **View devices and printers**.
 - Windows 7 and Windows Server 2008 R2: click **Start** > **Devices and Printers**.
 - Windows Vista and Windows Server 2008: click **Start** > **Control Panel** > **Printer**.
 - Windows XP and Windows Server 2003: click **Start** > **Printers and Faxes**.
- 2** Right-click your printing system model and click **Printing Preferences**.
- 3** In the **Printing Preferences** dialog box, select the desired features in all tabs.
- 4** Click **OK**.

2 Driver Overview

The lower panel of the **Printing Preferences** dialog box contains overview features that illustrate driver selections. Overview images and the settings list are available when selecting settings. After selecting driver settings, you can use **Print preview** to check the print job.

If the vertical screen resolution of your computer is 864 pixels or less, the lower panel of the **Printing Preferences** dialog box does not appear. Under this condition, the button showing the current PDL is on the bottom left, and the **Print preview** check box is on the bottom right of the visible dialog box.



Overview Images

Overview images appear in the lower panel of the **Printing Preferences** dialog box. Each image illustrates different driver settings. Images are changed

automatically when some driver settings are selected, or you can click the tabs on the left side to change the image.

The printing system image displays most attached devices. **Source** and **Destination** selections are highlighted in green.

The page image is updated based on page selections made in the **Quick Print** tab, **Basic** tab, and **Layout** tab.

The grayscale image illustrates grayscale settings selected in the **Imaging** tab.

The current page description language (PDL) is displayed in all of the images. You can change the PDL temporarily from any **Printing Preferences** tab to enable driver features.

Selecting a PDL in Printing Preferences

- 1 In the overview image area, click **PDL**.
- 2 In the **Page Description Languages (PDL)** dialog box, select the desired page description language from the **Available languages** list.
 - If you select **PCL XL**, you can select **Smart duplex printing** and **Skip blank pages**.
 - If you select **KPDL**, you can select **Smart duplex printing** and **Skip blank pages** or **Data passthrough**. Note that if you select **Data passthrough**, **EMF spooling** is unavailable in the **Advanced** tab. When accessing the printer driver from the application's **Print** dialog box, **Data passthrough** is unavailable.
 - If you select **PDF**, you can click **PDF Settings** to open the **PDF Settings** dialog box.
 - If you installed the XPS driver, you can click **XPS Settings** to open the **XPS Settings** dialog box.
- 3 You can select the **GDI compatible mode** option to improve the output quality of graphics created by your application.
- 4 Click **OK**.

Settings List

The tree view in the lower panel of each tab displays current settings for most driver features. You can scroll down to view features for all driver tabs. As each option is selected, the current selection is displayed in the tree view. You can click the minus (-) or plus (+) signs to hide or show details.

Print Preview

The **Print preview** check box appears in the lower panel of each tab. After selecting driver settings, you can use **Print preview** to check the print job. Text and images are displayed in the preview, along with any optional **Watermark** or **Security Watermark**. If you are satisfied with the preview, you can print. Or you can cancel printing if you want to change driver settings.

Previewing a Print Job

- 1 Select desired driver settings in all tabs, or select a profile.
- 2 In any tab, select **Print preview**.
- 3 Click **OK** in all dialog boxes.
- 4 When the **Print preview** dialog box appears:
 - Click the arrow buttons to view document pages.
 - Click the magnifying glass icons to zoom in or out.
 - To close the preview and make additional changes in driver settings before printing, click the “X” button.
 - If you are satisfied with the preview, click the printer button to print the job.

Kyocera Logo

The **Kyocera** logo appears at the bottom of **Device Settings** and the **Printing Preferences** dialog box. Clicking the logo opens the **About** dialog box that displays the driver version number and driver plug-in information.

Displaying Version Information

- 1 In **Device Settings** or the **Printing Preferences** dialog box, click **Kyocera** logo > **Version** to view the following driver information:
 - File Name**
 - Version**
 - Description**
 - Date**
 - Manufacturer**
 - Comments**
- 2 To view copyright information, click **Legal Notices**.
- 3 Click **OK** to close the driver information dialog boxes.

Displaying Plug-in Information

- 1 In **Device Settings** or the **Printing Preferences** dialog box, click **Kyocera** logo > **Plug-in** to view the following plug-in information:
 - Module**
 - Description**
 - Version**
- 2 Click **OK** to close the driver information dialog boxes.

3 Device Settings

In **Device Settings**, you can select installed printing system options so the associated features can be used with the printer driver. You can also match the memory setting in the driver with the memory installed in your printing system, which lets the driver manage font downloads more efficiently. Administrator, User, PDL (Page Description Language), and Compatibility settings can also be selected.

Accessing Device Settings

- 1 Depending on your operating system:
 - Windows 10, Windows 8.1, and Windows Server 2012 R2: right-click **Start > Control Panel > View devices and printers**.
 - Windows 8 and Windows Server 2012: open **Control Panel > View devices and printers**.
 - Windows 7 and Windows Server 2008 R2: click **Start > Devices and Printers**.
 - Windows Vista and Windows Server 2008: click **Start > Control Panel > Printer**.
 - Windows XP and Windows Server 2003: click **Start > Printers and Faxes**.
- 2 Right-click your printing system model, then:
 - Windows 10, Windows 8.1, Windows Server 2012 R2, Windows 8, Windows Server 2012, Windows 7, and Windows Server 2008 R2: click **Printer properties**.
 - Windows Vista, Windows Server 2008, Windows XP, and Windows Server 2003: click **Properties**.
- 3 Click **Device Settings**.

Device Options

Optional devices extend the capabilities of your printing system for source and job storage.

In a client/server environment, this feature is unavailable to a client logged in as a restricted user.

Setting Device Options

- 1 In **Device Settings > Device options**, select the check boxes for all installed devices.
- 2 Click **OK**.

Auto Configure

Auto Configure detects the devices installed on a printing system that is connected over a network. **Auto Configure** can detect input devices, output devices, storage devices, memory, and RAM disk size. When your computer is connected to the printing system through a TCP/IP or WSD port, the **Auto Configure** button appears in **Device Settings**. **Auto Configure** updates the **Device options** list, **Memory**, **RAM disk**, and overview images to keep the printer driver consistent with the printing system configuration. **Auto Configure** varies by operating system.

Not all installed devices are detected by using **Auto Configure**. Before selecting **OK** in **Device Settings**, check the settings to make sure that they are correct.

Note: The default setting for Windows XP Service Pack 2 is for the Windows Firewall to be set to **On**. The setting can be changed to allow communication between the printing system and your computer. In the Windows **Security Alert** dialog box, click **Unblock**.

Silent Auto Configuration

Silent auto configuration checks the printing system every 10 minutes for changes in optional devices or memory. When a change is detected, the driver is automatically updated with the new settings. **Silent auto configuration** is only available for printer drivers installed in Windows Vista, and later.

In a client/server environment, this feature is unavailable to a client logged in as a restricted user.

Enabling Auto Configuration

1 Verify that all optional devices are attached to the printing system, and that it is turned on and ready to print.

2 In **Device Settings**, click **Auto Configure**.

In Windows XP, the driver settings are updated immediately.

In Windows Vista and later, the **Auto Configure** dialog box opens. Select from Auto configure options:

Auto Configure Now

Click the button at any time to retrieve the current settings from the printing system. It is recommended to do this when **Silent auto configuration** is turned off.

Silent auto configuration

Select to let the driver check the printing system at every occurrence of a fixed time period. The driver regularly checks for any changes in optional devices or memory.

3 Click **OK** in all dialog boxes.

Memory

Memory is the amount of standard and optional memory installed in the printing system. To maximize the downloading of printing system fonts, the driver must be set to match the total printing system memory. By default, the **Memory** setting matches the standard memory in the printing system. Depending on

your model, if optional memory is installed, set the memory in the printer driver to match the total amount of memory.

Setting the Memory

- 1 Depending on your model, install optional DIMM memory in the printing system.
- 2 In **Device Settings > Memory**, type or select the amount of total installed memory.

RAM Disk

The RAM disk functions as a virtual storage device, saving print requests into the printing system's memory. Selections vary by printing system model. Because the RAM disk is temporary memory, all data stored there is lost when the power is turned off. The setting for RAM disk size must match the operation panel setting. The maximum RAM disk size depends on the amount of installed memory.

If selected, the **Ignore application collation** feature in the **Compatibility Settings** dialog box lets the driver control collation. RAM disk can then increase the print speed of collated multiple copies by sending the print job just once.

In a client/server environment, this feature is unavailable to a client logged in as a restricted user.

Setting RAM Disk

- 1 At the printing system's operation panel, turn on RAM disk and set its size.
- 2 In **Device Settings > Device options**, select **RAM disk**.
- 3 In the **RAM disk** text box, type or select the desired RAM disk size.

Administrator Settings

With **Administrator Settings**, you can set options that include controlling accessibility, displaying features in the interface and setting a password to control access to the **Administrator Settings** options.

In a client/server environment, this feature is unavailable to a client logged in as a restricted user.

General

In the **General** tab, an administrator can control the display of the **Quick Print** tab. Some **SNMP** settings, a job e-mail notification, and other miscellaneous settings can also be selected.

Show Quick Print Tab

With this feature, you can control the display of the **Quick Print** tab. You can define basic print options into group profiles for improved accessibility.

With a cleared check box for **Show Quick Print tab**, the tab does not appear in the **Printing Preferences** dialog box.

To enable this feature, in **Device Settings > Administrator > General**, select **Show Quick Print tab**.

With a selected check box for the **Show Quick Print tab**, the tab appears in the **Printing Preferences** dialog box. When you select the **Show Quick Print tab** check box, you can access additional check boxes:

Hide other tabs displays only the **Quick Print** tab to the user.

Set Quick Print tab as default opens to this tab when you access **Printing Preferences**.

Hide Edit Quick Print control prevents users from customizing the **Quick Print** tab.

Send Count Information

With this feature, you can embed count information in the print job, which can be used by some applications for accounting purposes. Count information includes the number of copies produced as well as duplex printing, multiple pages per sheet, color mode, color page count, and paper size values.

Send Count information is selected automatically when **Net Manager** is used. When **PDF** is selected as the PDL, or in the XPS driver, only color page count information is embedded in the print job.

To enable this feature, in **Device Settings > Administrator > General**, select **Send Count information**.

Send Application Name

With this feature, you can send the application name with a print job, so that a different printing process is used for each application.

This option is unavailable when **PDF** is selected as the PDL.

To enable this feature, in **Device Settings > Administrator > General**, select **Send Application name**.

Associate Profile with Application

With this feature, you can set all printing from each installed application to use the same driver settings as defined in a profile. Before using this feature:

A profile must be created in the **Profiles** dialog box, accessed from any **Printing Preferences** tab.

An association must be created between a profile and an application in the **Application Based Printing** dialog box, accessed from the **Profiles** dialog box.

This feature is enabled by default. To disable this feature, in **Device Settings > Administrator > General**, clear the **Associate Profile with application** check box.

Password Protect Administrator Settings

You can set **Password protect administrator settings** in the **Administrator Settings** dialog box to prevent unauthorized changes in this dialog box. If selected, this setting prompts you to enter a password and confirm the password. This password protection blocks access to all **Administrator Settings** options.

Setting the Administrator Password

- 1 In **Device Settings** > **Administrator** > **General**, select **Password protect administrator settings**.
- 2 In the **Password** dialog box, enter a password, using at least 4 and no more than 16 characters. Reenter the password in **Confirm password** and click **OK**.

Clearing the Administrator Password

- 1 In **Device Settings**, click **Administrator**.
- 2 In the **Enter Password** dialog box, type the password and click **OK**.
- 3 In the **Administrator Settings** dialog box, clear the **Password protect administrator settings** check box and click **OK**.

Hide Factory Default Profile

With this feature, you can hide or show the **Factory Default** profile in the **Quick Print** tab and the **Profiles** dialog box.

With the check box selected, the **Factory Default** profile does not appear in the lists.

With the check box cleared, the **Factory Default** profile appears in the lists.

Hide Lower Pane

With this feature, you can reduce the size of the **Printing Preferences** dialog box by hiding the lower pane. The overview images and settings list are removed from view. PDL selection, **Profiles** buttons, and the **Print preview** check box are still available.

For some screen display and screen resolution settings, the **Hide lower pane** check box is selected automatically.

SNMP Settings

Simple Network Management Protocol (**SNMP**) is an application layer protocol that governs the management of devices agents, and network management systems. Managed devices, such as printing systems, collect and store management information for the network management systems. **SNMP** security levels are specified by settings in the **SNMP settings** dialog box. With **SNMPv3**, encryption and authentication support are provided. **SNMP** settings must be made in the printer driver and in the printing system's home page.

The following **SNMP** options are available:

SNMPv1/v2c

It communicates with the managed device using **Read community name** and **Write community name**.

SNMPv3

Security enhancements for authentication and encryption require a user name and password. Authentication and privacy options are available by clicking **Settings**.

Apply to other models

This option displays a list of installed printing systems to apply the selected **SNMP** settings.

SNMPv3 Options

You can select **SNMPv3** options for secure communication with the printing system.

Authentication

This option provides an algorithm to check that a transferred file has arrived intact. Message Digest 5 (**MD5**) and Secure Hash Algorithm 1 (**SHA1**) are hash algorithms used to authenticate packet data.

MD5

This option provides a cryptographic hash function with a 128-bit hash value.

SHA1

This option produces a message digest that is 160 bits long. **SHA1** is the successor to **MD5**.

Privacy

This option uses encryption for secure communication. It is available after you select the **Authentication** option. You may select one **Privacy** option.

DES

This option uses the Data Encryption Standard for encryption. **DES** turns cleartext into ciphertext via an encryption algorithm. It encrypts and decrypts data using 8-byte blocks and a 56-bit key.

AES

This option uses the Advanced Encryption Standard for encryption. **AES** is a symmetric block cipher that can process data blocks of 128 bits, using cipher keys with lengths of 128, 192, and 256 bits. It is more secure than **DES**.

Selecting SNMP Settings

- 1 In **Device Settings** > **Administrator** > **General**, click **SNMP Settings**.
- 2 Select **SNMPv1/v2c** or **SNMPv3**.
For **SNMPv1/v2c**, type the **Read community name** and **Write community name**, to a maximum of 32 characters.
For **SNMPv3**, type a **User name** to a maximum of 32 characters, and a **Password** from 8 to 32 characters.
- 3 To set authentication and privacy options for **SNMPv3**, click **Settings**.
- 4 In the **SNMPv3 Settings** dialog box, select from the available options, and click **OK**.
- 5 Under **Apply to other models**, you can choose from available models. The **SNMP** settings are applied to all selected models.
- 6 Click **OK**.

Job E-mail Notification

This option lets you send an e-mail address with a print job. When the job finishes printing, the device sends an e-mail notification to the e-mail address. This is useful when the device is printing many jobs and a user must wait for a job to print.

For a restricted user in a client/server environment, the **Administrator** button in **Device Settings** becomes the **Identity** button. A user can enter e-mail notification data in the **Identity Settings** dialog box.

Selecting E-mail Notification Options

- 1 In **Device Settings** > **Administrator** > **General**, select **Notify when printing is completed**.
- 2 Choose an e-mail address option:
Select **Use specific e-mail address**, and type a valid e-mail address. In a client/server environment, a client user can change this address.
Select **Prompt for e-mail address**, and click **OK**. When you click **OK** in the **Print** dialog box, type a valid e-mail address in the **Print Options** or **Identity Settings** dialog box, and click **OK**.
- 3 Click **OK** in all dialog boxes.

Lock Settings

An administrator can specify settings at the tab or feature level in the driver, and then lock them. The settings are then applied to all print jobs, and changes are restricted. The settings are locked in **Device Settings** > **Administrator** > **Lock Settings**. For example, a driver setting could be set for printing duplex documents. This would save paper, resulting in cost savings and ecological benefits.

Locking a setting will also lock the feature where it appears in other tabs. For example, selecting **Duplex** will also select and lock that feature in the **Quick Print** and **Basic** tabs.

The administrator can also set a password that is required to temporarily unlock a feature.

In a client/server environment, this feature is unavailable to a client logged in as a restricted user.

Lock Settings Options

The **Lock Settings** tab displays driver settings that an administrator can lock. Once locked, user changes are restricted and the settings are applied to all print jobs. Once the settings are made, the **Password settings** option can be accessed. This lets an administrator control usage of paper and toner amounts.

EcoPrint

This option locks the **EcoPrint** setting selected in the **Quick Print**, **Basic**, or **Imaging** tabs.

Duplex

This option locks the current **Print on both sides** setting selected in the **Quick Print** or **Basic** tabs.

Multiple pages per sheet

This option locks the current **Pages per sheet** setting in the **Quick Print** tab and the **Multiple pages per sheet** setting in the **Layout** tab. The **Pages per sheet** option in the **Layout** tab is not locked.

Profile with application

This option locks a defined profile of driver settings by application.

Job tab

This option locks settings selected in the **Job** tab.

Security watermark

This option locks the **Security Watermark** settings selected in the **Advanced** tab. **Security Watermark** is an optional plug-in.

Watermark

This option locks the **Watermark** settings selected in the **Advanced** tab.

Password settings

The password set by the administrator locks the selected driver features. When the administrator sets the password, the **Unlock** icon appears in the driver tabs or the **Application Based Printing** dialog box. To unlock a feature, click **Unlock** and type the password.

Locking Driver Settings

- 1** In **Device Settings > Administrator**, click **Lock Settings**.
- 2** Select the check box for each driver feature to be locked.
- 3** Select the **Password settings** check box if you wish to set a password to temporarily unlock settings.
 In the **Password Settings** dialog box, type a password from 4 to 16 characters. Retype the password in **Confirm password**, and click **OK**.
 To remove the password, clear the **Password settings** check box. In the **Unlock Password** dialog box, type the password, and click **OK**.
- 4** To save your **Lock Settings** selections, click **OK**.

When a password is set, the **Unlock** icon appears in driver tabs where the locked features appear. To unlock a feature and change its settings temporarily, click **Unlock** and type the password.

User Login

User login provides job restriction by user, in contrast to the **Job accounting** feature, which assigns privileges by division or department. A maximum of 100 login user names and passwords can be created and stored in the printer driver and registered on the printing system. For some models, the **User Login** is not supported.

Users are identified by user name and password. The user name can be in the user principal name UPN format: username@domain.com. This feature limits printing privileges to specified users for secure printing and accounting. The number of pages printed by each user is tracked by the printing system.

Users added in the printer driver must also be manually registered at the printing system's operation panel.

In a client/server environment, some options are unavailable to a client.

For a restricted user in a client/server environment, the **Administrator** button in **Device Settings** becomes the **Identity** button. A user can enter user login data in the **Identity Settings** dialog box.

User Login Options

User login settings selected in the driver are applied to every print job sent from your computer.

Use specific name

This option can be used to specify a name and password to use the same **User login** for every print job. If this option is selected, the user does not have to type the name and password for each print job.

A client computer in a client/server environment can accept the default name and password set by the administrator or type another name and password. Clicking **Reset** restores the default values.

Prompt for name

This option prompts the user for a name and password. You can use a name that is not on the list, and the name is not added to the list. When sending a print job, type a name and password when prompted, then click **OK** to print.

Prompt for name and validate

This option prompts for a name and password. For the job to print, the name and password entered must be on the **Login user name** list. You can use the **Login user names** entered in the **Login user name** list of the driver. When sending a print job, type a name and password when prompted, then click **OK** to print. This option ensures that the job prints, only after verifying that the selected name is saved in the driver.

Validate user name (computer) or prompt for login user name

This option searches for the Windows **User name** in the driver's **Login user name** list. Validation is done every time the user prints a job. If the Windows **User name** exists in the **Login user name** list, the associated driver **Login user name** and password from the list are used for the print job.

If a match is not found, the driver checks for administrator or user permissions. With user permissions, the print job is canceled, and the user is prompted to contact an administrator to establish printing permissions. With administrator permissions, the driver prompts for the **Login user name** and password. Along with the Windows **User name**, these are then added to the list so succeeding print jobs do not require the user to enter a **Login user name** and password again.

Login user name

Click to add, delete, edit, import, or export login user names and passwords. Once a **Login user name** list is created, the list can be exported as a group by saving it as a text file (.CSV, .KXC., and .TXT). To import a **Login user name** list, browse for an existing list and save it in your printer driver.

Printing with User Login

After login user names are assigned and user login mode is set to **On** at the printing system, you can choose **User login** to print in user login mode.

In a client/server environment, the client is automatically set to the **User Login** selection made in the server.

- 1 In **Device Settings > Administrator Settings > User Login**, select **User Login**.

- 2 Select a **User Login** option:
 - Use specific name**
 - Prompt for name**

If you select the **Use specific name** or **Prompt for name** option, proceed to step 5.

Note: The remaining **User Login** options become available when you create a login user name list.

- 3 Under the **Login user name** list, click the buttons to view and manage the list.
- 4 Select from the remaining **User Login** options:
 - Prompt for name and validate**
 - Validate user name (computer) or prompt for login user name**
- 5 Click **OK** in all dialog boxes.
- 6 Print the document from the application.
- 7 When the **Print Options** or **Identity Settings** dialog box appears, type or select a name and password, and click **OK**.

Job Accounting

Job accounting gives an administrator control of a printing system. Selections vary by printing system model. With **Job accounting**, account IDs (identification numbers) can be assigned to users or departments. A specific account ID can be assigned, and then required before printing. After account IDs are created, from the printing system operation panel you can view the number of copies associated with a specific ID, as well as limit the number of copies for individual IDs. Account IDs can be a maximum of 8 digits.

Note: **Job accounting** must be enabled on the printing system. A maximum of 100 account IDs can be assigned on the printing system and stored in the printer driver.

In a client/server environment, some options are unavailable to a client computer.

For a restricted user in a client/server environment, the **Administrator** button in **Device Settings** becomes the **Identity** button. A user can enter Job Accounting data in the **Identity Settings** dialog box.

Job Accounting Options

Job accounting supports the following options:

Use specific account ID

Select this option to track the print jobs of a user or group with an account ID. It sends the account ID with each print job.

An administrator can restrict a user or group from changing their account ID by using the **Password protect administrator settings** in the **Administrator Settings** dialog box. When printing, the user can type a

different account ID in the **Job** tab. The default selection in **Administrator > Job Accounting** is not changed.

A client computer in a client/server environment can accept the default account ID set by an administrator or type another account ID. Clicking **Reset** restores the default values.

Prompt for account ID

Select this option to track the print jobs of a user or group with an account ID as well as prompt for an account ID. At the time a print job is sent, the user is prompted to enter a Job accounting ID.

Account IDs

Add, edit, or delete account IDs from the list. A maximum of 100 account IDs can be stored in the driver. After an account ID list is created, the list can be exported as a group by saving it as a text file (.CSV, .KXC, .TXT). To import an account ID list, browse for an existing list and open it.

Prompt for account ID and validate

Select this option to prompt for an account ID that is saved in the driver. When sending a print job, type an account ID when prompted, and then click **OK** to print. The account ID is validated against the account ID list. If typed incorrectly, you are prompted to type it again.

Display account ID list

Select this option to display the account ID list at the time of printing. The print job can be assigned to a user or group. The account ID list is stored in the driver and more than one ID must be established for the list to appear.

Validate user name (computer) or prompt for account ID

This option searches for the Windows User name in the driver's **Account IDs** list. Validation is done every time the user prints a job. If the Windows User name exists in the **Account IDs** list, the associated driver account ID from the list is used for the print job. If the **Account ID** is not associated with the Windows User name, a message appears to prompt you to enter the **Account ID** you want associated with your user name.

If a match is not found, the driver checks for administrator or user permissions. With user permissions, the print job is canceled, and the user is prompted to contact an administrator to establish printing permissions. With administrator permissions, the driver prompts for the account ID. Along with the Windows User name, this is then added to the list so succeeding print jobs do not require the user to enter an account ID again.

Adding or Editing an Account ID

- 1** In **Device Settings > Administrator > Job Accounting**, select **Job accounting**.
To create an account ID, click **Add**.
To edit an existing account ID, select it from the list and click **Edit**.
- 2** Under **Account ID**, enter a number to a maximum of 8 digits.
- 3** Under **Description**, enter a description of the account ID, such as a user or group.
- 4** Under **User name**, enter a Windows User name, to a maximum of 20 characters. The User name is not case-sensitive.

- 5 Click **Add** to add the name to the **User names (computer)** list. A maximum of 100 names can be added to each account ID.
- 6 To remove an account ID from the list, select it and click **Delete**.
- 7 Click **OK**.

Printing with Job Accounting

- 1 In **Device Settings > Administrator > Job Accounting**, select **Job accounting**.
- 2 Select a **Job Accounting** option:
 - Use specific account ID**
 - Prompt for account ID**If you select the **Use specific account ID** or **Prompt for account ID** option, continue to step 5.

Note: The remaining **Job accounting** options become available when you create an account ID list.

- 3 Next to the **Account IDs** list, click the buttons to view and manage the list.
- 4 Select from the remaining **Job accounting** options:
 - Prompt for account ID and validate**
 - Display account ID list**
 - Validate user name (computer) or prompt for account ID**
- 5 Click **OK** in all dialog boxes.
- 6 Print the document from the application.
- 7 For some options, when the **Print Options** or **Identity Settings** dialog box appears, type or select an account ID, and click **OK**.

Net Manager

Net Manager is a server-based application that provides centralized user authentication, authorization, user access control, and secure pull printing features. The **Net Manager** application must be installed separately. It is also necessary to make settings in the printer driver **Device Settings > Administrator > Net Manager** to integrate with **Net Manager**. This **Net Manager** driver feature is installed as an optional component of the driver.

The XPS driver does not support **Net Manager**. For more information about **Net Manager**, please contact your printing system dealer.

An administrator can set the **Net Manager** server and user information for users and groups to print according to defined policies.

When policies restrict printing features, **Net Manager** reconfigures the printer driver so that the restricted printing features are unavailable to the user or group. The **Net Manager** options let you choose how conflicts are handled between a policy and a driver selection.

With secure pull printing, you can select the printing device that will print after sending the job. To use the secure pull printing feature, the driver must be connected to the **Net Manager** spooler server using the **Net Manager** spooler port. Print jobs are held in the **Net Manager** spooler server until the user is authenticated on the printing system.

For a restricted user in a client/server environment, the **Administrator** button in **Device Settings** becomes the **Identity** button. A user can enter **Net Manager** data in the **Identity Settings** dialog box. If you select **Use Windows authentication**, the **Identity** button can not be used.

Selecting Net Manager Options

- 1 In **Device Settings > Administrator > Net Manager**, select **Net Manager**.
- 2 Enter the server address and port number. The default port number is 9094.
- 3 Select an authentication option:
 - Use Windows authentication**

Select to use Windows login information for **Net Manager** authentication. The **Net Manager Login** dialog box does not appear during printing unless Windows authentication fails. If selected, continue to step 5.

In a workgroup environment, **Use Windows authentication** can not be used.
 - Use specific name**

Select to enter specific login information. When selected, continue to step 4.
- 4 Type the **Login user name** and **Password**. The Login user name can be in the user principal name (UPN) format to support multiple domains:
username@domain.com
- 5 You can select **No notifications for policy conflicts** if you do not want a message to appear when policy conflicts occur during printing. When selected, choose a printing result:
 - Continue printing**

Apply the policy and print the job
 - Cancel printing**

Cancel the print job
- 6 Click **OK** in all dialog boxes.

Printing with Net Manager

- 1 From the application, open the **Print** dialog box. You can click **Preferences** or **Properties** to open the **Properties** dialog box and view printing restrictions set by the policy.

- 2 If the **Net Manager Login** or **Identity Settings** dialog box appears, enter a Login user name and password. This dialog box is generated when an invalid or blank **Net Manager** user name or password is set in the driver. The **Net Manager Login** dialog box does not appear if **Use Windows authentication** is selected in **Administrator > Net Manager**, except when the Windows authentication fails.
- 3 You can click **Do not ask again** to use the most recently-saved Login user name and password for each print job. When selected, the **Net Manager Login** dialog box does not appear again.
- 4 Click **Log in** to send the print job to the **Net Manager** spooler server, where the Login user name and password are authenticated.
The print job appears on the **Job** tab on the main **Net Manager** web application.
- 5 Depending on the **Net Manager** settings and before the job is printed, the **Print Options** dialog box appears with information about your print quota. Click **OK** to continue.
- 6 On the printing system's operation panel, enter your authentication credentials to release spool jobs. You can print from any printing system managed by the **Net Manager** server.

User Settings

With **User Settings**, you can specify user and department names, select the default unit of measure, and change the driver display language.

In a client/server environment, this feature is unavailable to a client logged in as a restricted user.

Identification

With **Identification**, you can identify your print job with a **User name** and **Department** name, to a maximum of 31 characters. The **User name** can be used to identify a print job stored on the storage device.

Setting User Identification

- 1 In **Device Settings > User**, type your preferred name in the **User name** text box.
- 2 Type your department or group name in the **Department** text box.
You can type a maximum of 31 characters in the **User name** and **Department** text boxes.
- 3 Click **OK** in all dialog boxes.

Units

You can set **Inches** or **Millimeters** as the unit of measurement. This is used for the following settings:

Page Sizes settings in the **Basic** tab.

Spacing setting in the **Add Watermark** and **Edit Watermark** dialog boxes in the **Advanced** tab.

Poster settings and **Gutter** settings in the **Layout** tab.

Selecting a Unit of Measurement

- 1 In **Device Settings** > **User**, select **Inches** or **Millimeters**.
- 2 Click **OK** in all dialog boxes.

Language Preference

The **Language preference** option specifies the user interface language of **Device Settings** in **Properties** and all tabs of **Printing Preferences**.

Available languages vary depending on your locale and your computer settings.

Setting Language Preference

- 1 In **Device Settings** > **User**, select the desired language from the **Select language** list.
- 2 Click **OK** in all dialog boxes.

Page Description Languages (PDL)

With **Page Description Languages (PDL)**, you can specify the contents and layout of a printed page. In **Device Settings**, you can choose from **PCL XL** (Printer Command Language XL), **PCL 5e**, **KPDL** (Kyocera Page Description Language), or **PDF** (Portable Document Format). To add **PDF** to the list of PDL choices, you must install the **Output to PDF** plug-in. The printer default is **PCL XL**, which is suitable for most printing purposes.

After you select a PDL, the selection appears in the lower corner of the overview image in **Device Settings** and in all **Printing Preferences** tabs. You can change the PDL temporarily from any **Printing Preferences** tab.

In **GDI compatible mode**, vector graphics are rasterized for printing as bitmap images. Use the **GDI compatible mode** option to improve the output quality of the graphic created by the application.

In a client/server environment, this feature is unavailable to a client logged in as a restricted user.

If your application supports the XML Print Specification, then XPS printing can be performed after installing the XPS driver. With the XPS driver, the only available PDL is **XPS**.

PDL Options

The PDL options, available in the **Page Description Languages (PDL)** dialog box, are accessed in **Device Settings**.

PCL XL

The most recent version of HP PCL and PCL 6. This PDL includes PCL 5e features. PCL XL lacks backward compatibility with earlier PCL versions, though it is enhanced over PCL 5e in these areas:

- Reduced file size
- Better print speed

- Faster return to application
- Supports **Security watermark**
- Supports **Line thinning**

PCL 5e

- Fully compatible with earlier PCL versions
- Bidirectional communication support
- Wide selection of fonts for use with Microsoft Windows applications
- Complex graphics might not print as well

Start of the page/End of the page available in **Prologue/Epilogue**

KPDL

KPDL is used when printing from applications that support PostScript 2 or 3.

- An emulation of PostScript printing
- Strong graphics reproduction
- Print speeds may be slower than PCL 5e
- Requires more printing system memory than PCL 5e
- Enables native TrueType font downloading
- Supports most **Graphics settings** options

EMF Spooling unavailable when **Data passthrough** is selected.

PDF

Output to PDF is a plug-in that lets you print or save documents from multiple sources to Adobe Portable Document Format (PDF). The PDF format is independent of the operating system and application software used to create documents.

- An alternative to existing commercial applications for creating PDF documents
- Retains original document appearance
- Can be viewed and printed on operating systems that display PDF content
- Some driver features unavailable

PDL Settings

For some page description languages, additional settings are available in the **Page Description Languages (PDL)** dialog box.

PCL XL Settings

Smart duplex printing

This option automatically keeps a sheet of paper from being sent through the duplex unit if the sheet is only printed on one side. The duplex unit is bypassed for the following types of print jobs: a one page document, one page from a multi-page document, or a multi-page document that prints onto a single sheet. Selecting this option can reduce wear on the mechanical duplex unit, and result in comparatively faster printing times.

Skip blank pages

This option prevents the printing system from outputting any page that contains no data, or that has, at most, one space character. Selecting this option can save paper, and result in comparatively faster printing times. This

feature is unavailable for booklet, duplex, or multiple pages per sheet printing.

KPDL Settings

Smart duplex printing

This option automatically keeps a sheet of paper from being sent through the duplex unit if the sheet is only printed on one side. The duplex unit is bypassed for the following types of print jobs: a one page document, one page from a multi-page document, or a multi-page document that prints onto a single sheet. Selecting this option can reduce wear on the mechanical duplex unit, and result in comparatively faster printing times.

Skip blank pages

This option prevents the printing system from outputting any page that contains no data, or that has, at most, one space character. Selecting this option can save paper, and result in comparatively faster printing times. This feature is unavailable for booklet, duplex, or multiple pages per sheet printing. When selected, **Data passthrough** is unavailable.

Data passthrough

This option reduces errors when printing complex jobs from applications that use PostScript formatting. When selected, **EMF spooling** is unavailable in the **Advanced** tab.

PDF Settings

Provides options for printing and saving documents to Adobe PDF format. See PDF topics for details.

Selecting a PDL in Device Settings

- 1 In **Device Settings > PDL**, select the desired page description language from the **Available languages** list.
 - If you select **PCL XL**, you can select **Smart duplex printing** and **Skip blank pages**.
 - If you select **KPDL**, you can select **Smart duplex printing** and **Skip blank pages** or **Data passthrough**. Note that if you select **Data passthrough**, **EMF spooling** is unavailable in the **Advanced** tab.
 - If you select **PDF**, you can click **PDF Settings** to open the **PDF Settings** dialog box.
- 2 You can select the **GDI compatible mode** option to improve the output quality of graphics created by your application.
- 3 Click **OK** in all dialog boxes.

PDF

With the **Output to PDF** plug-in, you can print and save documents from multiple sources to Adobe PDF format. This feature can be used as an alternative to existing commercial applications for creating PDF documents. Documents saved as PDF retain their original appearance, and can be viewed and printed on operating systems that display PDF content.

For a document using mixed paper sizes, all pages in the PDF use the size of the first page.

Note: With **PDF** selected as the PDL, only a limited set of driver options are available.

PDF Options

You can select PDF options if you have installed the **Output to PDF** plug-in.

The following options are available in the **PDF Settings** dialog box:

Embed fonts

This option ensures that document fonts appear accurately in the PDF file on screen. This option ensures accurate reproduction but significantly increases the file size.

Compress data

This option enables flat compression for the generated PDF document. This option significantly reduces the file size.

Print and save options

From the list, select whether to print (**Print only**), save a PDF file (**Save to file**), or both (**Print and save**). If a save option is selected, additional options are available in the **PDF Settings** dialog box.

Save As Color

This option saves the PDF as a color document. This option does not appear when **Print only** is selected.

Automatically save to default folder

Select to save a PDF file automatically in a default folder. Browse to a location to save your PDF file.

Date and time

Select the check box to use the same file name plus the current date and time whenever the file is saved. Clear the check box to replace an existing file, if a file with the same name already exists.

Encryption

Encryption adds the selected level of encryption to the PDF. When selected, password protection is available so that a document cannot be opened or altered by unauthorized users.

Arc4 40

This encryption option provides low level security for a PDF document. This option supports Adobe Acrobat and Adobe Reader 6.0 or earlier.

Arc4 128

This encryption option provides low level security for a PDF document. This option supports Adobe Acrobat and Adobe Reader 6.0 and later.

AES 128

This encryption option provides high level security for a PDF document. This option supports Adobe Acrobat and Adobe Reader 7.0 and later.

AES 256

This encryption option provides high level security for a PDF document. This option supports Adobe Acrobat and Adobe Reader 9.0 and later.

Password protection

Select passwords for changing security settings and for opening a document. Passwords are supported to a maximum of 16 characters.

Change security settings

Select the check box and type an owner password. Within Adobe Acrobat, this password is required to change the document restrictions in the **Files > Properties > Security** section. When a document with this password is

opened in Adobe Reader, it cannot be printed or edited, and document data cannot be copied.

Open document

Select the check box and type a user password. The user password must be entered at the time the PDF document is opened. This password must be different from the owner password.

Printing and Saving to PDF

- 1** In **Device Settings > PDL**, in the **Available languages** list select **PDF**.
- 2** Click **PDF Settings**.
- 3** In the **PDF Settings** dialog box, under **Print and save options** select whether to print or save or both.
- 4** If a save option is selected in step 3, select additional folder, encryption, and password options.
- 5** Click **OK** in all dialog boxes.
- 6** Open and print the document.
- 7** Name and save the PDF file.

XPS Driver

For Windows 10, Windows 8.1, Windows Server 2012 R2, Windows 8, Windows Server 2012, Windows 7, Windows Server 2008 R2, Windows Vista Service Pack 2 with the latest platform updates, and Windows Server 2008, you can use the XML Paper Specification (**XPS**). This Page description language provides an additional method for displaying, processing, and printing documents. As both a PDL and a document format, **XPS** requires compatible printing system hardware and software written for the Windows Presentation Foundation (WPF) architecture. **PCL** and **KPDL** are not compatible with an **XPS** environment. Therefore, an **XPS** driver supports a single PDL setting. The **XPS** driver can be installed from the **Product Library** disk. In the **Installation Method** menu, click **Custom Mode**, and on the **Custom Installation** page, select **KX XPS DRIVER**.

Some driver features are unavailable when using the **XPS** driver.

XPS Options

You can select XPS options when using the XPS driver.

The following options are available in the **XPS Settings** dialog box:

Print and save options

From the list, select whether to print or save or both. If a save option is selected, additional options are available in the **XPS Settings** dialog box.

Automatically save to default folder

Select to save an XPS file automatically in a default folder. Browse to a location to save your XPS file.

Date and time

Select the check box to use the same file name plus the current date and time whenever the file is saved. Clear the check box to replace an existing file, if a file with the same name already exists.

Printing and Saving to XPS

- 1 In **Device Settings > PDL**, click **XPS Settings**.
- 2 In the **XPS Settings** dialog box, under **Print and save options**, select whether to print or save or both.
- 3 If a save option is selected in step 2, select additional folder options.
- 4 Click **OK** in all dialog boxes.
- 5 Open and print the document.
- 6 Name and save the XPS file.

Compatibility Settings

With **Compatibility Settings**, you can specify media source values, override the application's **Collate** setting, and combine the **Source** and **Media type** lists in the **Basic** tab.

In a client/server environment, this feature is unavailable to a client logged in as a restricted user.

You can restore all the options in the **Compatibility Settings** dialog box to the default by clicking **Reset**.

Media Source Enumeration

Media source enumeration supports compatibility for media source values unique to the printer driver, such as those for cassettes or feeders. Your newly installed printer driver maintains identical media source support with the driver it replaces, whether for this driver or one from another manufacturer. If media source macros exist for the older driver, then the alignment of media source values maintains support without the need to change the macros.

Use the **Driver Info** utility (\Utility\Driver Info\DrvInfo.exe) to compare the source values for all installed drivers.

If the values for a given media source differ between printer drivers, you can reassign an enumerated value to create a match between the drivers.

Setting Media Sources

- 1 In **Device Settings > Compatibility**, from the **Media source enumeration** list select the paper supply method. The current value is listed in the **Enumerated value** box.
- 2 Type an **Enumerated value** for the media source, and click **Apply**. To align settings with a different driver, this value should align with those in the other driver.
- 3 Click **OK** in all dialog boxes.

Ignore Application Collation

This option bypasses the **Collate** setting in software applications, and gives priority to the printer driver setting.

With the check box selected, the printer driver **Collate** setting is used.

With the check box cleared, the application **Collate** setting is used.

Selecting Printer Driver Collation

- 1 In **Device Settings > Compatibility**, select **Ignore application collation**.
- 2 Click **OK** in all dialog boxes.

Combine Source and Media Type Lists

You can change the driver's **Basic** tab so that **Media type** and **Source** are combined into one list, labeled **Source**. In the combined list, Media types are listed first, followed by cassettes and **Multipurpose tray**.

Creating a Combined Source List

- 1 In **Device Settings > Compatibility**, select **Combine source and media type lists**.
- 2 Click **OK** in all dialog boxes.

Removing a Plug-in

You can remove an installed plug-in from the driver. If removed, the plug-in features do not appear in the driver interface.

Note: To remove the **Output to PDF** module, **PDF** must not be selected as the PDL.

- 1 In **Device Settings**, click **Kyocera logo > Plug-in**.
- 2 Select a plug-in module from the list and click **Delete**, then **Yes**.
- 3 Click **OK** in all dialog boxes.

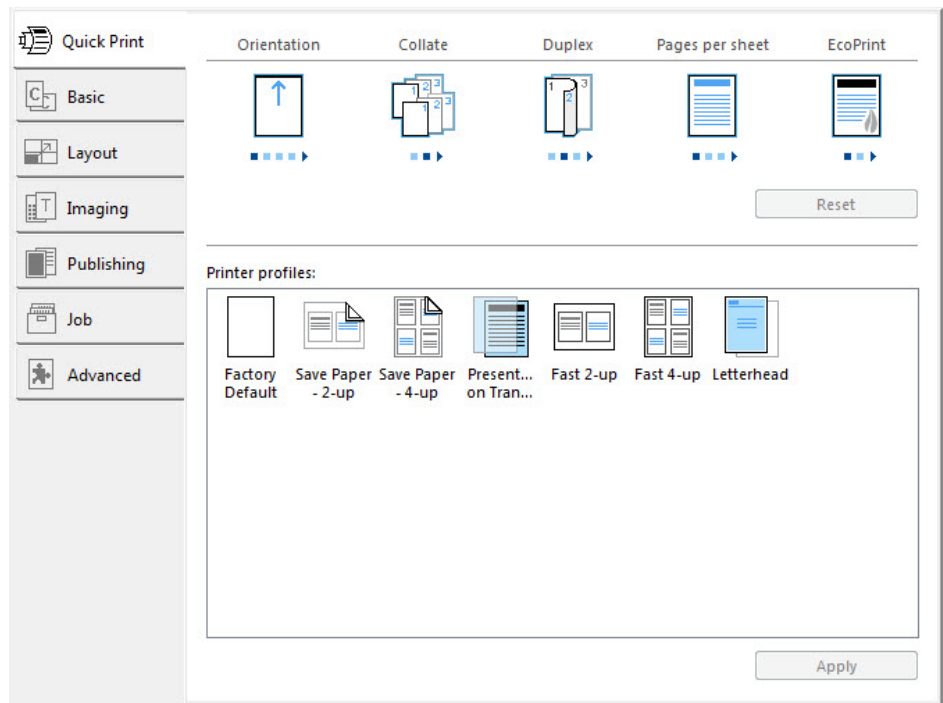
4 Quick Print

In the **Quick Print** tab, you can apply basic print settings to print jobs. You can select options quickly in a simple user interface.

Any **Quick Print** settings can be saved as a group, called a profile, and applied to any print job. Profiles support common printing tasks.

To return to the original settings, click **Reset**. The **Reset** button is available when accessing the printer driver from the application's **Print** dialog box.

The administrator can set the view of the **Quick Print** tab through the **Installation** process, or in **Device Settings > Administrator**.



Quick Print Options

You can set up to 5 print options on the **Quick Print** tab. You can create your own customized view of print options with **Edit Quick Print Options**. You can also select from profiles that have been set with predefined options for frequently run print jobs.

Orientation

Click the **Orientation** icon repeatedly to change between portrait, landscape, rotated portrait, and rotated landscape printing formats. The rotated options rotate the job orientation 180 degrees.

Collate

Collate specifies the order in which the pages of a multiple copy job are printed. Click the icons to change between on and off.

With **On** selected, the first time the print job is sent to the printing system the data is rendered as page images in the printing system's memory. The remaining job copies are printed from the stored data. This avoids the extra processing involved in sending every copy from the computer to the printing system.

With **On** selected, the driver prints the complete job set by set (123, 123). With **Off** selected, it prints each page by set (111, 222). For example, with **On** selected, three copies of a five-page document outputs as pages one through five in succession, three times.

The printer driver automatically overrides the application's **Collate** setting and uses the printer driver setting. You can use the application's **Collate** setting by clearing the **Ignore application collation** check box in the **Compatibility Settings** dialog box accessed from **Device Settings**.

Duplex

Duplex printing is printing on both sides of each page. Click the **Duplex** icon repeatedly to change between flipping on long edge, flipping on short edge, and off. A duplex unit can turn the paper over to allow printing on the reverse side. **Flip on long edge** or **Flip on short edge** must be selected to print on both sides of the cover and insert pages.

Flip on long edge

Turn the long edge of the page to view the content.

Flip on short edge

Turn the short edge of the page to view the content.

An administrator can ensure that all jobs are printed on both sides by selecting **Device Settings > Administrator > Lock Settings**, and then selecting **Duplex**.

Duplex should be turned on before using **Lock Settings**. When **Duplex** is turned off, using **Lock Settings** makes **Duplex** unavailable to all users.

Pages per Sheet

Pages per sheet prints several pages on a single sheet of paper for the purpose of reviewing the document and conserving paper. The size and readability of the multiple pages decrease as the number of pages per sheet is increased. Click the **Pages per sheet** icon repeatedly to change between 2 pages per sheet, 4 pages per sheet, and off. You can set the arrangement of the pages from the **Layout** tab as well as print borders around each of the pages.

When **Pages per sheet** is selected, **Scaling** and **Poster** are unavailable in the **Layout** tab.

An administrator can ensure that all jobs are printed with multiple pages on a sheet by selecting **Device Settings > Administrator > Lock Settings**, and then selecting **Multiple pages per sheet**.

Pages per sheet should be turned on before using **Lock Settings**. When **Pages per sheet** is turned off, using **Lock Settings** makes **Pages per sheet** unavailable to all users.

EcoPrint

EcoPrint changes the text and graphics to appear lighter in the print job. **EcoPrint** does not increase print speed. Click the **EcoPrint** icon to change between on and off.

An administrator can ensure that all jobs are printed in **EcoPrint** mode by selecting **Device Settings > Administrator > Lock Settings**, and then selecting **EcoPrint**.

EcoPrint should be turned on before using **Lock Settings**. When **EcoPrint** is turned off, using **Lock Settings** makes **EcoPrint** unavailable to all users.

Edit Quick Print Options

The assortment of icons at the top of the **Quick Print** tab can be customized to include features that you use most often. Any number of icons from 0 to 5 can be displayed. All icons can be removed from view if you want to use only the **Printer profiles** options in the **Quick Print** tab.

Note: An administrator can hide the **Edit** button by selecting **Hide Edit Quick Print control** in **Device Settings > Administrator**. The **Edit** button is unavailable when the driver is accessed from an application's **Print** dialog box.

Selecting Quick Print Options

- 1 Depending on your operating system:
 - Windows 10, Windows 8.1, and Windows Server 2012 R2: right-click **Start > Control Panel > View devices and printers**.
 - Windows 8 and Windows Server 2012: open **Control Panel > View devices and printers**.
 - Windows 7 and Windows Server 2008 R2: click **Start > Devices and Printers**.
 - Windows Vista and Windows Server 2008: click **Start > Control Panel > Printer**.
 - Windows XP and Windows Server 2003: click **Start > Printers and Faxes**.
- 2 Right-click your printing system model and click **Printing Preferences**.
- 3 Select the **Quick Print** tab.
- 4 Click **Edit**.
- 5 In the **Edit Quick Print Options** dialog box:
 - To add a feature to the **Quick Print** tab, select the feature under **Available**, and click the arrow to move the feature to **Selected**. A maximum of 5 features can appear under **Selected**.
 - To remove a feature from the **Quick Print** tab, select the feature under **Selected**, and click the arrow to move the feature to **Available**. To use only the **Printer profiles** in the **Quick Print** tab, move all features to **Available**.
 - Click the up or down arrows to change the position of the features under **Selected**. The feature at the top appears first in the **Quick Print** tab.
 - To restore the list to factory default options, click **Reset**.

- 6 Click **OK** to save your settings.

Profiles

You can save printer driver settings as a profile. You can select multiple options in the **Quick Print** tab and the other **Printing Preferences** tabs, save them to a profile, and use all of them at once when you apply the profile. You can then use that profile to print the same type of print job again without having to reselect all the settings. In **Printing Preferences**, the **Save as** and **Profiles** buttons appear at the bottom of all tabs.

A maximum of 26 profiles can be established in one driver, including the **Factory Default** profile. In **Device Settings > Administrator**, you can choose to hide the **Factory Default** profile. Settings made in **Device Settings** cannot be saved to a profile.

Any profile except **Factory Default** can be edited, deleted, imported, and exported.

Selecting a Profile

Quick Print tab

- 1 In the **Quick Print** tab, select a profile. The settings list shows a summary of settings for that profile.
- 2 Click **Apply**.
- 3 Click **OK**.

Profiles dialog box

- 1 In any of the **Printing Preferences** tabs, click **Profiles**.
- 2 In the **Profiles** dialog box, select a profile. The settings list shows a summary of settings for that profile.
- 3 Click **Apply**.
- 4 Click **OK**.

Saving a Profile

The Save As Button

- 1 Set the printing options you want for your print job by opening **Printing Preferences** and selecting all your driver settings.
- 2 In any tab, click **Save as**.
- 3 To identify the profile, type a **Name**, select an **Icon**, and type a **Description**.
- 4 Click **OK** to save the profile.

The newly added profile appears in the **Profiles** dialog box and the **Quick Print** tab.

Note: To reset the printer driver to default settings, select the **Factory Default** profile, if available, and then click **Apply**. This clears the settings of a selected profile.

The Profiles Button

- 1** Set the printing options you want for your print job by opening **Printing Preferences** and selecting all your driver settings.
- 2** In any tab, click **Profiles**.
- 3** Click **Save**.
- 4** To identify the profile, type a **Name**, select an **Icon**, and type a **Description**.
- 5** Click **OK** to save the profile.
The newly added profile appears in the **Profiles** dialog box.
- 6** Click **OK** to close the dialog box.
The newly added profile appears in the **Quick Print** tab.

Note: To reset the printer driver to default settings, select the **Factory Default** profile, if available, and then click **Apply**. This clears the settings of a selected profile.

Editing a Profile

- 1** In any tab, click **Profiles**.
- 2** In the **Select profile** section, select the profile to be edited, and then click **Edit**.
- 3** You can edit any of the three options: **Name**, **Icon** and **Description**.
- 4** Click **OK** to save the edited changes.
The newly edited profile appears in the **Profiles** dialog box and the **Quick Print** tab.
- 5** Click **Apply** to use the selected profile in the current print job, or click **OK** to close the dialog box.

Deleting a Profile

- 1** In any tab, click **Profiles**.
- 2** In the **Select profile** section, select the profile to be deleted, and then click **Delete**.

- 3 In the delete confirmation box, click **Yes** to accept.
- 4 Click **Close** to close the **Profiles** dialog box.

Importing a Profile

- 1 In any tab, click **Profiles > Import**.
- 2 Browse for an existing profile (.KXP), select it, and then click **Open**.
A message appears if any of the profile settings in the imported file are unavailable in the existing driver. Select **Yes** to import the profile, or **No** to cancel the import.
If you selected **Yes**, the newly imported profile appears in the **Profiles** dialog box.
- 3 Click **Apply** to use the selected profile for the current print job, or click **OK** to close the dialog box.
The newly added profile appears in the **Quick Print** tab.

Exporting a Profile

- 1 In any tab, click **Profiles**.
- 2 In the **Select profile** section, select the profile to be exported, and then click **Export**.
- 3 In the **Export Profile** dialog box, name and save the profile.
- 4 Click **OK** to close the **Profiles** dialog box.

Application Based Printing

An administrator can associate a profile with an application so that all printing from the application uses the same profile settings. This makes profiles easier to use and ensures consistent printing from an application. For example, a duplex printing profile can be applied to all spreadsheet printing to save paper, or reports in Microsoft Word can be set to print with consistent stapling and print quality.

Associations between profiles and applications can be created at any time in the **Application Based Printing** dialog box, accessed from the **Profiles** dialog box. A maximum of 25 associations can be created. To use the associations in printing, you must select **Associate Profile with application** in **Device Settings > Administrator > General**.

In a client/server environment, a user on a client computer can view details about server associations but cannot change settings or select another profile.

An administrator can ensure that all jobs from an application are printed with an associated profile by selecting **Device Settings > Administrator > Lock Settings**, and then selecting **Profile with application**.

Adding an Association

- 1 In any tab, click **Profiles**.

- 2** In the **Profiles** dialog box, click **Application**.
- 3** In the **Application Based Printing** dialog box, click **Add**.
- 4** In the **Add Association** dialog box, enter a name for the association, to a maximum of 31 characters.
- 5** Under **Select application**, choose an application by one of the following methods:
 - Select **Application name**, and select an installed application from the list.
 - Select **Filename (*.exe)**, and enter a valid executable file name (.EXE) for an application that allows printing, or click **Browse** to find a file located on your computer.
- 6** Under **Select profile**, select a profile from the list.
- 7** Click **OK** in all dialog boxes.

Deleting an Association

- 1** In any tab, click **Profiles**.
- 2** In the **Profiles** dialog box, click **Application**.
- 3** In the **Application Based Printing** dialog box, select the association to be deleted, and then click **Delete**.
- 4** In the confirmation box, click **OK** to accept.
- 5** Click **OK** in all dialog boxes.

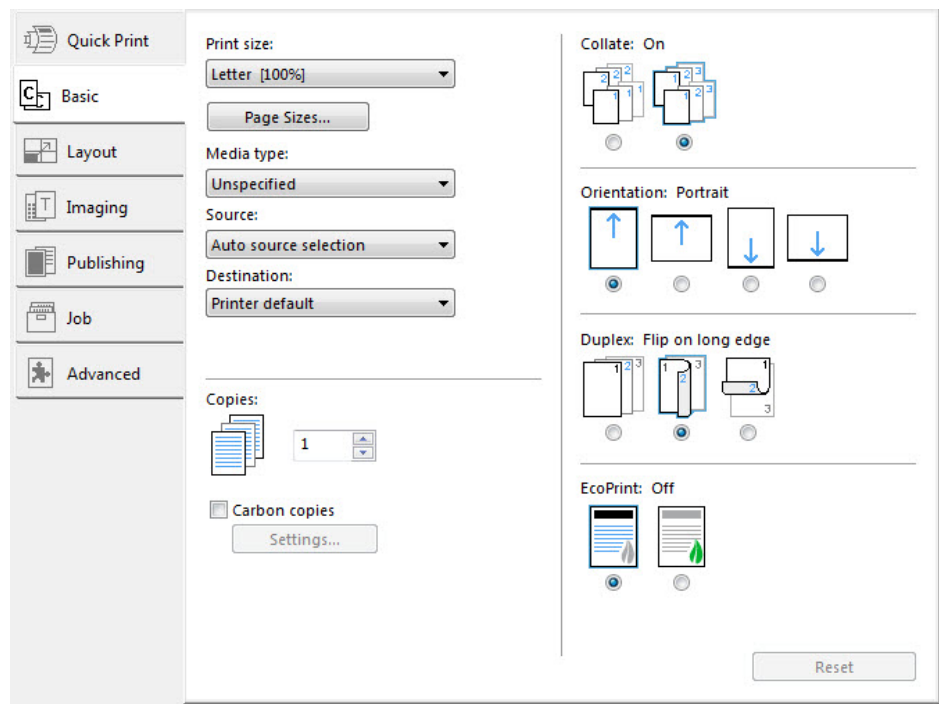
Editing an Association

- 1** In any tab, click **Profiles**.
- 2** In the **Profiles** dialog box, click **Application**.
- 3** In the **Application Based Printing** dialog box, select the association to be edited and click **Edit**.
- 4** In the **Edit Association** dialog box, you can change desired settings under **Association name**, **Select application**, or **Select profile**.
- 5** Click **OK** in all dialog boxes.

5 Basic

In the **Basic** tab, you can specify the most commonly used printer driver settings.

To return to the original settings, click **Reset**. The **Reset** button is available when accessing the printer driver from the application's **Print** dialog box.



Print Size

With **Print size**, you can select the output size of the document. To use this setting, ensure that the **Page Sizes** setting matches the page size setting in your application. If the print size is different from the page size in your application, then each page is enlarged or reduced to match the print size.

The percentage value shown in brackets indicates the size of the print size setting relative to the page size setting.

Page Sizes

With **Page Sizes**, you can choose the document size in the application. Once selected, the **Print size** list displays the percentage value of the print size setting relative to the page size setting.

You can create a page size with your chosen dimensions for printing on non-standard size paper. You can then save the custom setting to the **Page Sizes** and **Print size** lists for later selection.

The **Page Sizes** dialog box displays the unit of measurement in inches or millimeters. You can change the **Units** setting in the **User Settings** dialog box, accessed from **Device Settings**.

Creating a Custom Page Size

- 1 In the **Basic** tab, click **Page Sizes**.
- 2 In the **Page Sizes** dialog box, click **New**.
- 3 A default custom name appears in the **Name** box. Type a name for your custom page size.
- 4 Type or select values for the short edge and long edge. If a typed value exceeds the allowable limit, it automatically adjusts to the limit.
- 5 When finished, click **Save**.
- 6 Click **OK** to close the **Page Sizes** dialog box.

The custom page size appears in the **Print size** list, which is used for enlarging and reducing the sizes of prints.

Deleting a Custom Page Size

- 1 In the **Basic** tab, click **Page Sizes**.
- 2 In the **Page Sizes** dialog box, select the custom size to delete.
- 3 Click **Delete**.
- 4 Click **OK** to close the **Page Sizes** dialog box.

Printing with Custom Size Pages

- 1 Load custom-sized paper into the **Multipurpose tray**.
- 2 In the **Basic** tab, select the name of your custom page size in the **Print size** list.
- 3 Click **OK** to return to the **Print** dialog box.
- 4 Click **OK** to start printing.

Media Type

Media type instructs the printer to search for the type of media that is requested by the application or the printer driver. The choices shown may change depending on the selection in **Source**. The default is **Unspecified** and if selected, the driver does not switch to another source tray if the selected tray is

empty. If **Auto media selection** is selected, then the printer searches for another tray or cassette using the same paper size and media type.

You can display the custom media type names from the printing system. If any names have been changed at the printing system, the new names appear in place of default names. To display the printing system names, use the **Auto Configure** feature in **Device Settings**.

Some media types, such as transparencies, labels, and envelopes must be supplied from the **Multipurpose tray**. Ensure that the paper is properly loaded by following the instructions outlined in the printing system's *Operation Guide*.

Note: **Source** and **Media type** are separate items in the dialog box, but can be combined using the **Combine source and media type lists** setting in **Device Settings > Compatibility**. If they are combined, **Media type** is unavailable on the **Basic** tab, and media types can be selected in the **Source** list.

Source

Source specifies the tray or cassette that supplies paper for a print job. The default is **Auto source selection**, which instructs the printer to search for the media requested by the application or the printer driver. If the selected tray or cassette empties during a print job, then the printer searches for another source, and continues the job.

Some media types, such as transparencies, labels, and envelopes must be supplied from the **Multipurpose tray**. Ensure that the paper is properly loaded by following the instructions outlined in the printing system's *Operation Guide*.

Note: **Source** and **Media type** are separate items in the dialog box, but can be combined using the **Combine source and media type lists** setting in **Device Settings > Compatibility**. If they are combined, **Media type** is unavailable on the **Basic** tab, and media types can be selected in the **Source** list.

Destination

This setting specifies which output tray is used for the print job output.

Copies

This setting specifies the number of copies to print. You can print up to 999 copies.

Carbon Copies

This feature lets you print additional copies on paper from different trays or cassettes. This is useful for printing copies of documents such as invoices on different colored paper or media type. The maximum number of copies can be printed for each carbon copy.

You can use the **Prologue/Epilogue** feature in the **Advanced** tab to add a logo or heading to each carbon copy.

When **Carbon copies** is selected, **Booklet** in the **Layout** tab, and all the features on the **Publishing** tab are unavailable.

Carbon copies is unavailable when **Net Manager** is selected in **Device Settings > Administrator > Net Manager**.

Printing Carbon Copies

- 1 In the **Basic** tab, select a source and number of copies for the original copy.
- 2 For each carbon copy, load the desired media types or colored paper into additional paper sources.
- 3 Select the **Carbon copies** check box.
- 4 Click **Settings**.
- 5 In the **Carbon Copy Settings** dialog box, select the number of copies for each source.
The total number of copies for all sources is displayed under **Total**.
- 6 Select a **Source** or **Media type** or both for each carbon copy.
- 7 Click **OK** to return to the **Print** dialog box.
- 8 Click **OK** to start printing.

Collate

Collate specifies the order in which the pages of a multiple copy job are printed. Click the icons to change between on and off.

With **On** selected, the first time the print job is sent to the printing system the data is rendered as page images in the printing system's memory. The remaining job copies are printed from the stored data. This avoids the extra processing involved in sending every copy from the computer to the printing system.

With **On** selected, the driver prints the complete job set by set (123, 123). With **Off** selected, it prints each page by set (111, 222). For example, with **On** selected, three copies of a five-page document outputs as pages one through five in succession, three times.

The printer driver automatically overrides the application's **Collate** setting and uses the printer driver setting. You can use the application's **Collate** setting by clearing the **Ignore application collation** check box in the **Compatibility Settings** dialog box accessed from **Device Settings**.

Printing Collated Documents

- 1 In the **Basic** tab, click the **Collate** icons to change between on and off.
- 2 Type or select the number of complete sets of the print job in the **Copies** box.
- 3 Click **OK** to return to the **Print** dialog box.
- 4 Click **OK** to start printing.

Orientation

This setting specifies the paper orientation of the print job. Click the **Portrait**, **Landscape**, **Rotated portrait**, or **Rotated landscape** icons. If a rotated option is selected, the print job orientation is rotated 180 degrees.

Duplex Printing

Duplex printing is printing on both sides of each page. A duplex unit can turn the paper over to allow printing on the reverse side. **Flip on long edge** or **Flip on short edge** must be selected to print on both sides of the cover and insert pages.

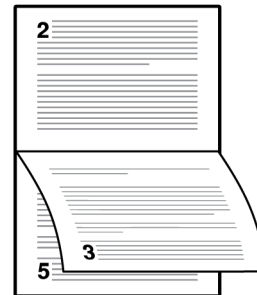
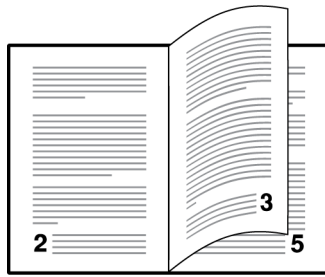
Flip on long edge

Turn the long edge of the page to view the content.

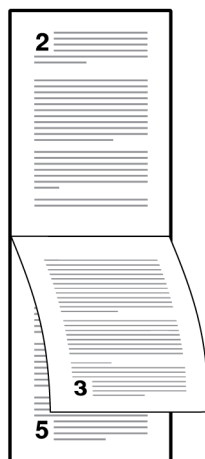
Flip on short edge

Turn the short edge of the page to view the content.

Flip on long edge



Flip on short edge



An administrator can ensure that all jobs are printed on both sides by selecting **Device Settings > Administrator > Lock Settings**, and then selecting **Duplex**.

Duplex should be turned on before using **Lock Settings**. When **Duplex** is turned off, using **Lock Settings** makes **Duplex** unavailable to all users.

Printing in Duplex Mode

- 1 In the **Basic** tab, click the **Flip on long edge** or **Flip on short edge** icon.
- 2 Click **OK** to return to the **Print** dialog box.
- 3 Click **OK** to start printing.

EcoPrint

EcoPrint makes the entire image, text and graphics, appear lighter in the print job. **EcoPrint** does not increase print speed.

EcoPrint also appears in the **Quick Print** tab and in the **Imaging** tab. Changes in **Quick Print**, **Basic**, or **Imaging** tabs are reflected in the other tabs.

An administrator can ensure that all jobs are printed in **EcoPrint** mode by selecting **Device Settings > Administrator > Lock Settings**, and then selecting **EcoPrint**.

EcoPrint should be turned on before using **Lock Settings**. When **EcoPrint** is turned off, using **Lock Settings** makes **EcoPrint** unavailable to all users.

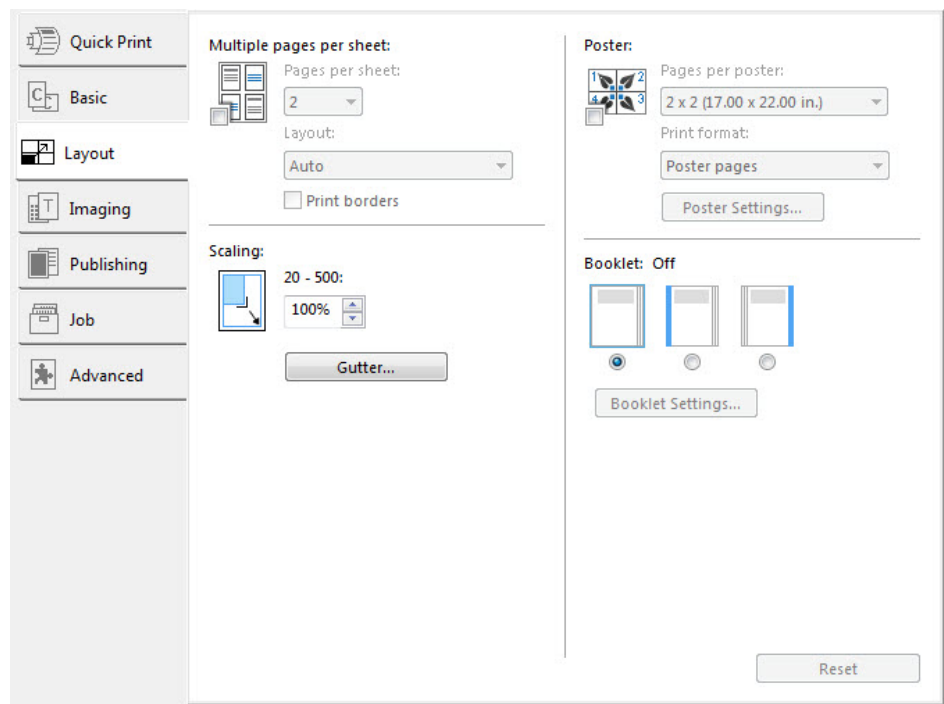
Selecting EcoPrint

- 1 In the **Basic** tab, click the **EcoPrint** icons to change between **On** and **Off**.
- 2 Click **OK** to return to the **Print** dialog box.
- 3 Click **OK** to start printing.

6 Layout

In the **Layout** tab, you can arrange document data on printed pages without affecting the original document.

To return to the original settings, click **Reset**. The **Reset** button is available when accessing the printer driver from the application's **Print** dialog box.



Multiple Pages per Sheet

Multiple pages per sheet prints several pages on a single sheet of paper for the purpose of reviewing the document and conserving paper. The size and readability of the multiple pages decrease as the number of pages per sheet is increased. You can set the arrangement of the pages as well as print borders around each of the pages in the **Layout** tab.

If **Multiple pages per sheet** is selected, **Scaling** and **Poster** are unavailable in the **Layout** tab.

An administrator can ensure that all jobs are printed with multiple pages on a sheet by selecting **Device Settings > Administrator > Lock Settings**, and then selecting **Multiple pages per sheet**.

Multiple Pages per Sheet should be turned on before using **Lock Settings**. When **Multiple Pages per Sheet** is turned off, using **Lock Settings** makes **Multiple Pages per Sheet** unavailable to all users.

Printing Multiple Pages per Sheet

- 1 In the **Layout** tab, click the **Multiple pages per sheet** icon.

- 2 In the **Pages per sheet** list, select the number of pages to print on each sheet of paper.
- 3 In the **Layout** list, select the direction the pages should flow.
- 4 If you want to print a border around each page, select **Print borders**.
- 5 Click **OK** to return to the **Print** dialog box.
- 6 Click **OK** to start printing.

Scaling

Scaling increases or decreases text and graphics on a page.

You can also select a gutter setting that enlarges the margins to accommodate manual stapling or manual hole punch.

If other **Layout** tab options are selected, **Scaling** is unavailable.

Setting Scaling on the Page

- 1 In the **Layout** tab, type or select a scaling percentage from 20 to 500.
- 2 Click **OK** to return to the **Print** dialog box.
- 3 Click **OK** to start printing.

Gutter

Gutter increases the margins around your text and graphics on the left side and at the top of the printed sheet. **Gutter** is often used for binding, hole punch, or stapling to make a print job easier to read. This creates a larger margin space by shifting the printable area to the right, or down, as much as one inch (25.4 mm).

Gutter width displays the unit of measurement in inches or millimeters. You can change the **Units** setting in the **User Settings** dialog box, accessed from **Device Settings**.

Creating a Gutter

- 1 In the **Layout** tab, click **Gutter**.
- 2 Under **Gutter width**, type or select a value between 0.20 to 1.00 inches (5.0 to 25.4 mm).

Short edge (top)

This selection modifies the outside margin on the top edge of the page.

Long edge (left)

This selection modifies the outside margin on the left side of the page.

Note: Availability of **Gutter** settings varies depending on **Orientation** and **Duplex** settings in the **Basic** tab.

- 3** If the content extends too close to the edge of the page, select **Reduce image to fit**. The content appears slightly reduced and away from the edge of the page.
If the content does not extend beyond the page when the gutter increases, clear **Reduce image to fit**.
- 4** Click **OK** to save gutter settings, and then click **OK** again to return to the **Print** dialog box.
- 5** Click **OK** to start printing.

Poster

The **Poster** feature lets you create a document to a size that is larger than the paper your printing system can support. You can print a poster, or banner, up to 25 times larger than the original document. Segments of the poster document are printed on several sheets of paper and with the assistance of poster settings, you can reassemble the sheets easily to create a poster.

If **Poster** is selected, other **Layout** tab options are unavailable.

Use **Pages per poster** to select the poster size in relation to the original document size. Each option shows the number of sheets to be printed and the maximum poster size.

Pages per poster displays the unit of measurement in inches or millimeters. You can change the **Units** setting in the **User Settings** dialog box, accessed from **Device Settings**.

Use **Print format** to print a proof sheet, along with the poster, to guide you in assembling the printed poster sheets.

Poster pages

This selection prints all of the sheets to be assembled as a poster.

Proof sheet

This selection prints all the poster pages on one sheet with markings that display the sheet assembly.

Poster pages and proof sheet

This selection prints all poster sheets and a one-page proof sheet.

Use **Poster Settings** to select options, in any combination to make it easier to create a poster. These options print visual cues on the poster sheets that provide help in cropping and assembling the pages.

Overlap edges

This selection duplicates the edges of document data on adjoining sheets. Poster appearance is improved when the edges overlap slightly. Select the check box, then type or select a value between 0.00 and 1.20 inches (0.0 and 30.4 mm). This option reduces the final poster size slightly.

Print crop marks

This selection prints a border at the edges of each poster sheet. You can crop each sheet on the border before assembling the sheets. This option ensures that data on adjoining sheets matches precisely.

Print assembly marks

This selection prints numbers at the edges of each sheet, matching numbers on adjoining sheets. Assemble each sheet edge to the same numbered edge on another sheet.

Printing a Poster

- 1** In the **Layout** tab, click the **Poster** icon.
- 2** In **Pages per poster**, select the poster size. Each option describes the number of sheets it takes to represent one finished poster page.
- 3** In **Print format**, select one of the options for a finished print format.
- 4** Click **Poster Settings** to select options in any combination. These options ensure a precise assembly of the pages to create the poster.
- 5** Click **OK** to return to the **Print** dialog box.
- 6** Click **OK** to start printing.

Booklet

Booklet prints a two-page layout on both sides of each sheet of paper. You can fold and bind the booklet in the center. Folded booklets are half the size of the selected paper.

Additional booklet options are available in the **Booklet Settings** dialog box:

Layout lets you choose how to create booklet layout settings.

Create from driver settings

Uses the driver settings for page sequence and pages per sheet. Select this option when the booklet layout is not created in the application.

Create from application settings

Uses the application settings for page sequence and pages per sheet. Select this option when the application creates the booklet layout.

When **Booklet** is selected, other **Layout** tab options are unavailable.

A different paper source can be selected for the booklet cover. To include a cover on the booklet, select the **Publishing** tab, then select **Cover mode**.

Printing a Booklet

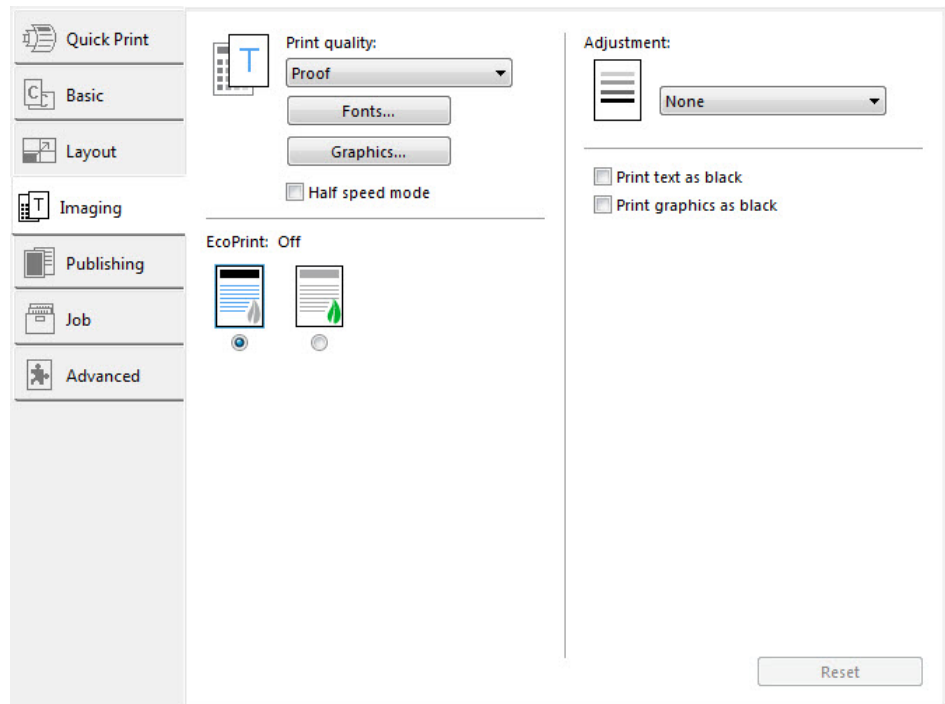
- 1** In the **Layout** tab, click the icon for one of the two binding options:
 - Left edge binding**
This selection prints text that reads from left to right.
 - Right edge binding**
This selection prints text that reads from right to left.

- 2 For additional booklet options, click **Booklet Settings**.
- 3 In the **Booklet Settings** dialog box, select from available **Layout** options, and then click **OK**.
- 4 Click **OK** to return to the **Print** dialog box.
- 5 Click **OK** to start printing.

7 Imaging

In the **Imaging** tab, you can manage print quality and grayscale settings.

To return to the original settings, click **Reset**. The **Reset** button is available when accessing the printer driver from the application's **Print** dialog box.



Print Quality and Custom Quality

Print quality lets you set the resolution for the print job. Resolution is a measurement, in dots per linear inch (dpi), that describes the sharpness and clarity of printed text and images. **Custom Quality Settings** lets you set a more refined resolution for the print job.

Print Quality Selection

In the **Imaging** tab, select a **Print quality** from the list.

High quality, Proof, Draft

Select the print resolution from available settings. **Proof** is unavailable when **PCL 5e** is selected in the **Page Description Languages (PDL)** dialog box.

Custom

Click **Custom** to open a settings dialog box with selections for a more refined resolution. **Resolution** can be set to **Fine 1200** or **Fast 1200** (unavailable for the PCL 5e Page description language), or **600 dpi** or **300 dpi**. **Kyocera image refinement** smoothes the edges of text and vector graphics and can be set to **On** or **Off**.

You can also select **EcoPrint**.

Selecting Print Quality

- 1 In **Imaging > Print Quality**, select a print quality from the list.
- 2 Click **Custom** to open a settings dialog box.
Resolution can be set to **Fine 1200**, **Fast 1200** (unavailable for the PCL 5e Page description language), **600 dpi** or **300 dpi**.
Kyocera image refinement can be set to **On** or **Off**.
- 3 Click **OK**.

Font Settings

A computer font is a data file containing a set of glyphs (visual representations of textual elements), characters, or symbols. Common terms for fonts are:

Outline fonts, in contrast to bitmap fonts, are defined as a set of mathematical lines and curves. An outline font is more easily scalable (designed to display and print clearly at any point size) than a bitmap font.

Bitmap fonts define each character as a pattern of pixels (the smallest resolvable rectangular areas of an image). Such fonts are not easily scalable and distort when reduced or enlarged.

Native fonts are the basic or original fonts installed with the computer operating system. TrueType fonts are the native fonts used by Microsoft Windows.

TrueType fonts are a type of scalable outline fonts. TrueType has long been the most common format for fonts on Microsoft Windows.

System fonts are the primary fonts used by the operating system. They are typically accessed through an application interface or through a common font dialog box.

Device fonts are stored either permanently or temporarily in the printing system memory.

Font Settings Options

In the **Font Settings** dialog box, you can specify how TrueType fonts are sent to the printing system. The chosen method affects the speed and quality of the print job:

Download as outlines

This method is best suited for large documents or print jobs using multiple fonts and font sizes. Print speeds are faster because of the optimization features in this setting. The repetition of similar font data sent to the printing system is reduced, thereby increasing the print speed. Print speed is not increased when using Asian fonts such as Japanese, Chinese, and Korean, because of the large amount of font information used for these particular fonts.

Allow native download

This method improves text quality and increases print speed by converting TrueType fonts to Adobe Type 42 font format. This feature is available when **KPDL** is selected as the PDL.

Download as bitmaps

Downloading fonts as bitmaps provides more detail, however it creates large file sizes. This is best suited for print jobs with custom fonts, very small fonts (point size 1-4), or Asian fonts.

Substitute with device fonts

Font substitution is the process of using one font in place of another when the intended font is unavailable to a printing system. Font substitution may be critical for output of documents to printing systems that are not well supported by a large font inventory. Standard PostScript fonts are available for substitution.

Note: GDI compatible mode does not support **Substitute with device fonts**.

Disable device fonts

In some cases, the printing system substitutes fonts even if you send the TrueType fonts as outline fonts or bitmap images. Select **Disable device fonts** to prevent substitution of device fonts for TrueType fonts.

This option also improves portability of printable data. If cleared, device fonts may not match when sent to a different printing system.

Some Adobe applications have device font limitations. To overcome these limitations, select **Disable device fonts**. Device fonts are normally visible in the application font lists as printer icons next to the font name, unless there are equivalent system fonts, in which case the "TT" TrueType icon remains.

Selecting Font Settings

- 1 In **Imaging > Fonts**, select one of the methods for sending TrueType fonts.
- 2 Click **OK** to return to the **Print** dialog box.
- 3 Click **OK** to start printing.

Setting Font Substitution

- 1 To set font substitution, you must open **Printing Preferences** outside of a printing application by the following procedure. Depending on your operating system:
 - Windows 10, Windows 8.1, and Windows Server 2012 R2: right-click **Start > Control Panel > View devices and printers**.
 - Windows 8 and Windows Server 2012: open **Control Panel > View devices and printers**.
 - Windows 7 and Windows Server 2008 R2: click **Start > Devices and Printers**.
 - Windows Vista and Windows Server 2008: click **Start > Control Panel > Printer**.
 - Windows XP and Windows Server 2003: click **Start > Printers and Faxes**.
- 2 Right-click the desired printing system model and click **Printing Preferences**.
- 3 In **Imaging > Fonts**, select **Substitute with device fonts**, then click **Fonts**.

In the **Fonts Substitution** dialog box, the **System fonts** list shows the fonts installed on your computer. The **Available device fonts** list shows the printing system fonts.

4 Select the system font, and then the available device font to be substituted.

5 You can click **Reset** to restore the default values.

6 Click **OK** to save your settings.

If the device font does not have similar font characteristics to the system font, character spacing in the document may appear incorrect.

Disabling Device Fonts

1 In **Imaging > Fonts**, select the **Disable device fonts** check box.

2 Click **OK** to save your settings.

Graphics Settings

Graphics are pictorial representations of information. Graphics can be functional (charts, diagrams) or artistic (drawings, photographs). With **Graphics Settings**, you can control the visual results of your printed graphics with options that can be set by the selected Page Description Language (PDL).

Pattern Scaling

Pattern scaling is a feature that can help improve visual compatibility between screen and print output. Graphics objects, such as a shape or a path, often include patterns and fills that are composed of collections of printed dots. A pattern is a planned or random repetition of colors, shapes, lines, values, and textures to create a visual arrangement. A fill is the application of a color or grayscale to a graphics object. If printed patterns and fills do not match the appearance of that on the screen, use **Pattern scaling** to select a different density of printed dots.

In **Imaging > Graphics**, select a **Pattern scaling** setting.

Auto (default setting)

This setting prints patterns and fills to match the on-screen appearance.

Coarse

This setting prints patterns and fills with the fewest number of lines, patterns, or dots. **Coarse** is the same as **Auto** when **PCL XL** or **PCL 5e** is selected as the PDL.

Medium

This setting prints patterns and fills with a greater number of lines, patterns or dots than the **Coarse** setting. **Medium** is the same as **Auto** if **KPDL** is selected as the PDL.

Fine

This setting prints patterns and fills with the greatest number of lines, patterns, or dots. Printed patterns and fills may appear more dense than the on-screen appearance.

Line Thinning

Line thinning reduces the pen width of lines used for barcodes and line drawings. Drawing values controlled by an application are not changed.

In **Imaging > Graphics**, select Line thinning settings. Line thinning is available when **PCL XL** is selected as the PDL. When **GDI compatible mode** is selected in the **Page Description Languages (PDL)** dialog box, Line thinning is not available.

In **Imaging > Graphics**, select a **Line thinning** setting.

Off (default setting)

Line thinning is not applied.

Barcodes

This setting reduces the pen width value for vertical and horizontal lines. It improves the readability of barcodes.

Fine lines

This setting reduces the pen width value for vertical, horizontal, and diagonal lines.

All

This setting reduces the pen width by a value of 1 for vertical, horizontal, and diagonal line used in barcodes or line drawings.

Correct fine lines by device

Enables correction of pen width by the device rather than by the driver, to improve the quality of barcode printing.

Inversion Options

Inversion is the opposite of the normal order, arrangement, or position of an image or printed content.

In **Imaging > Graphics**, select **Inversion options**. The settings are available when **KPDL** is selected as the PDL.

Reverse image

This setting prints images like a photo negative, reversing black and white areas of the image.

Mirror print

This setting prints the page content backwards, as it would appear in a mirror image.

Optimization

Optimization is a process or methodology of improving a printing system's function or effectiveness.

In **Imaging > Graphics**, select **Optimization**. The settings are available when **KPDL** is selected as the PDL.

Fast printing

This setting increases print speed and decreases spool size. It delivers images in binary format. It can be used for most everyday printing needs.

Document portability

This setting creates a PostScript file in ASCII text encoding. Unlike the binary format created in **Fast printing**, the ASCII text created with this selection can be edited.

CIE Option

CIE optimization bypasses the normal procedure of processing every aspect of the CIE color space used in applications such as Adobe Acrobat and Photoshop. This feature increases print speed for documents printed from these applications by optimizing CIE data. It has no effect on print jobs that do not use CIE data. **CIE optimization** should be selected for speed not accuracy, so printed output may be different from appearance on the screen.

In **Imaging > Graphics**, select the **CIE optimization** check box. **CIE optimization** is available when **KPDL** is selected as the PDL.

Halftone Screen

With **Halftone Screen** an experienced user can print different shades of gray as are found in photographs. Shades are produced by printing dots of various sizes and shapes, and by spacing them closer or farther apart. Shading can also be adjusted by the number of rows of data, the angle of the rows, and the shape of the data.

Halftone Screen is available when **KPDL** is selected as the PDL. It is unavailable when **GDI compatible mode** is selected in the **Page Description Language (PDL)** dialog box.

Setting the Halftone Screen

- 1 In **Imaging > Graphics**, click **Halftone Screen**.
- 2 Clear the **Use printer's default screens** check box.
- 3 Set the available options to the desired values:

Ink

This option is unavailable and is permanently set to **Black**.

Frequency

Displays the number of rows of dots per inch or centimeter. Set the range from 2.0 to 999.9, and select lines/inch or lines/cm.

Angle

Sets the angle at which rows are aligned. Set the range from -180 to 180 degrees.

Shape

Select the shape of the halftone dot:

Ellipse

Resists optical jump. An optical jump occurs when an area of an image suddenly become darker. An ellipse shape provides a smooth gradation of tones. Select **Ellipse** for images with dark areas.

Round

Resists moiré formation and dot gain. Moiré formation is an unintended pattern that occurs when two or more colors are printed at the wrong angles. The correct angles depend on the number of colors being printed. Dot gain is when the halftone dots increase when printed, causing a moiré pattern. Select **Round** for images with light tints and highlighted areas.

Line

Used for special effect. Select **Line** to change the effect by selecting a different angle.

- 4 Select **Increase accuracy of screens** for better print quality, possibly increasing print time.
- 5 Click **OK** to return to the **Print** dialog box.
- 6 Click **OK** to start printing.

Half Speed Mode

Half speed mode reduces the print speed to half the rated speed. When selected, the toner adheres better when printing on small size, thick, or textured paper. This mode may result in quieter printing.

To enable this feature, in the **Imaging** tab, select the **Half speed mode** check box.

Note: **Half speed mode** applies to all media types except **Transparency** and **Vellum**.

EcoPrint

EcoPrint changes toner saturation in the print job, making the entire print image, including text and graphics, appear lighter. **EcoPrint** does not increase print speed. The amount of toner varies based upon your printing system model and the type of data printed (text, graphics, or both).

EcoPrint is also available in the **Quick Print** and **Basic** tabs.

An administrator can ensure that all jobs are printed in **EcoPrint** mode by selecting **Device Settings > Administrator > Lock Settings**, and then selecting **EcoPrint**.

EcoPrint should be turned on before using **Lock Settings**. When **EcoPrint** is turned off, using **Lock Settings** makes **EcoPrint** unavailable to all users.

Selecting EcoPrint

- 1 In the **Imaging** tab, click the **EcoPrint** icons to change between **On** and **Off**.
- 2 Click **OK** to return to the **Print** dialog box.
- 3 Click **OK** to start printing.

Black and White Adjustment

Black and white adjustment settings change the brightness and contrast of graphics. These settings are useful if graphic images are printing too light, too gray, or too dark. Text remains unaffected.

Adjusting Black and White Settings

- 1 In the **Imaging** tab, under the **Adjustment** list, select **Custom**.
A preview image in the **Adjustment Settings** dialog box illustrates any brightness and contrast changes.

- 2** Type or select the **Brightness** value to lighten or darken the graphic images of the print job.

The brightest setting is +100; the darkest is -100. Zero is the default mid-level setting. Adjusting brightness allows for the customization of graphic images if images are printing too light or too dark.
- 3** Type or select the **Contrast** value to increase or decrease the proportion of light to dark in the graphic images of the print job.

A high contrast setting decreases the grayscale spectrum, making light grays lighter and dark grays darker. A low contrast setting increases the grayscale spectrum, making light grays darker and dark grays lighter.

The highest contrast setting is +100; the lowest is -100. Zero is the default mid-level setting. Adjusting contrast is useful if graphic images are printing too gray, or too black and white. Text remains unaffected.
- 4** You can click **Reset** to restore the default values.
- 5** Click **OK** to save the new black and white settings.

Text and Graphics Effects

Special settings are available for printing.

Print text as black

This option prints all color text as black. It produces faster printing of color text by reducing the amount of data sent to the printer. In black and white printing, it increases the detail for light-colored text printed.

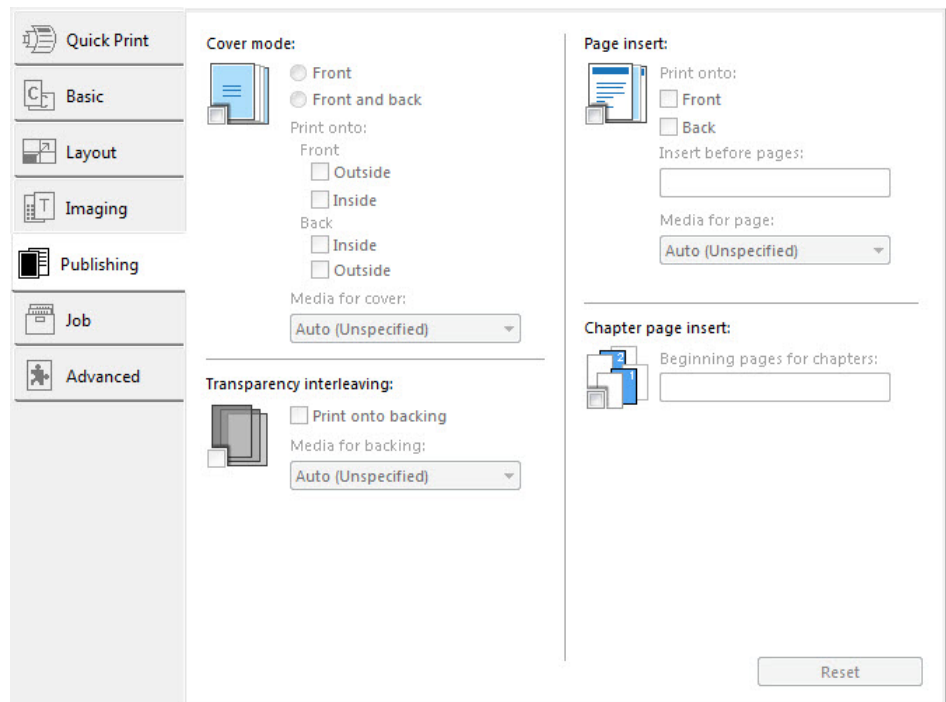
Print graphics as black

This option prints all color graphics with black, rather than grayscale. This feature is intended for CAD applications.

8 Publishing

In the **Publishing** tab, you can create covers and inserts for a print job, and add backing sheets between transparencies. The features on this tab are available only when **PCL XL**, **KPDL**, or **XPS** is selected as the PDL.

To return to the original settings, click **Reset**. The **Reset** button is available when accessing the printer driver from the application's **Print** dialog box.



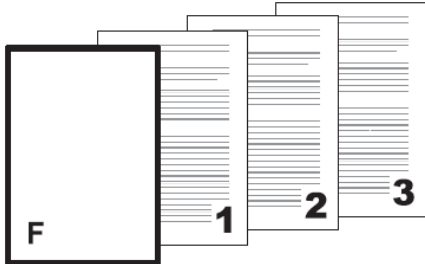
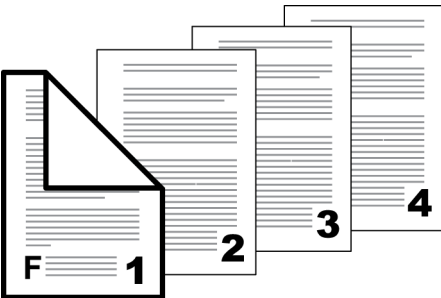
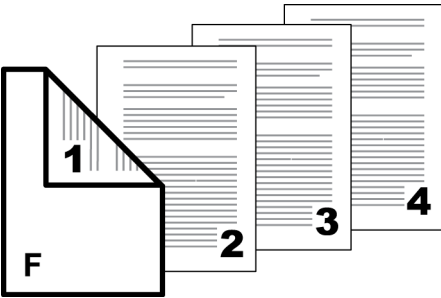
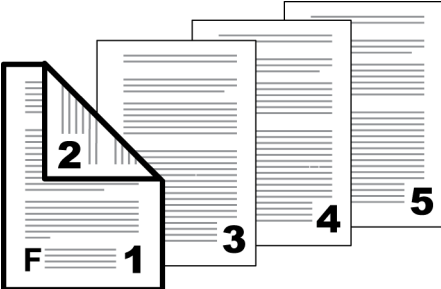
Cover Mode

Cover mode lets you add cover pages for the front and back of your document. You can print on cover pages of a different weight or color than the main document. The source of the cover paper is specified by adjusting the **Media for cover** settings in the **Publishing** tab.

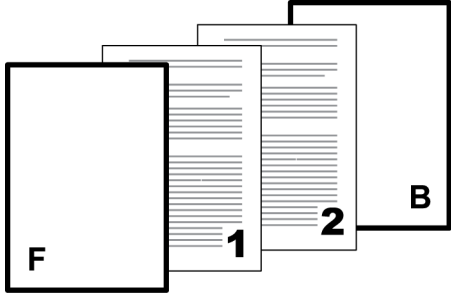
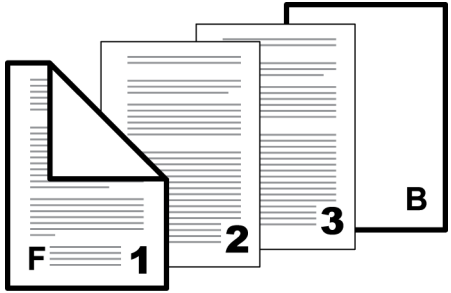
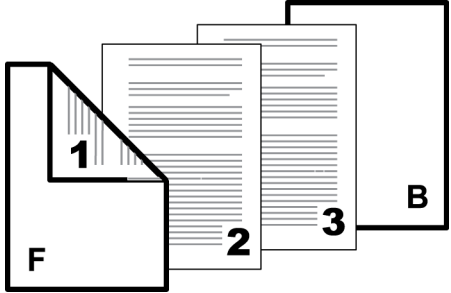
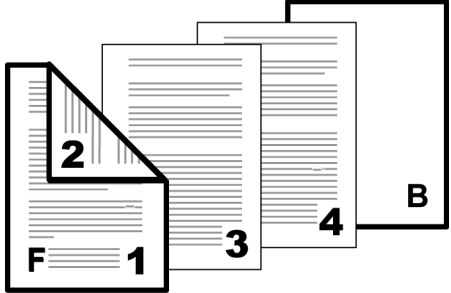
Duplex printing must be selected in the **Basic** tab or **Quick Print** tab in order to print using the **Front / Inside** or **Back / Outside** options.

Cover mode cannot be used with **Transparency interleaving**.

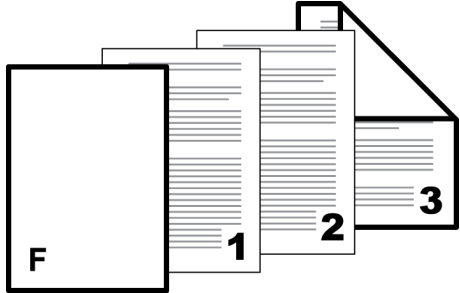
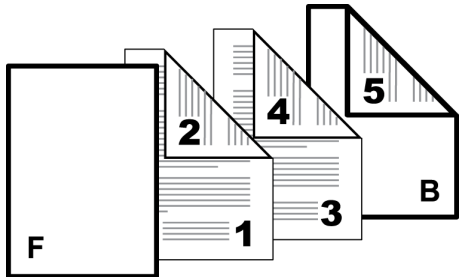
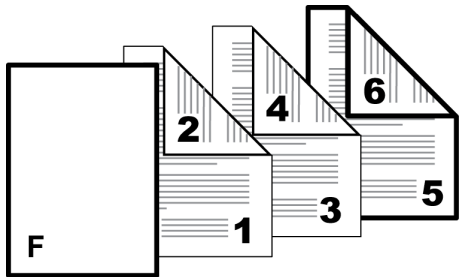
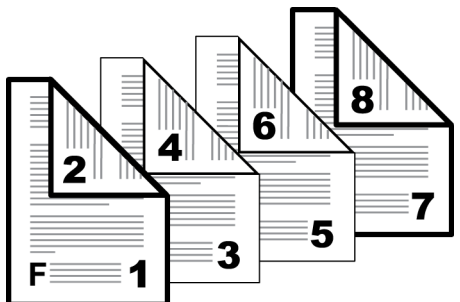
Cover Mode Options

Check Box Selection	Cover Insertion Type
<p>Front</p>	<p>Inserts a blank front cover.</p> 
<p>Front Front Outside</p>	<p>Prints on the outside surface of the front cover.</p> 
<p>Front Front Inside</p>	<p>Prints on the inside surface of the front cover.</p> 
<p>Front Front Outside Front Inside</p>	<p>Prints on the outside and inside surfaces of the front cover.</p> 

— continued

Check Box Selection	Cover Insertion Type
<p>Front and back</p>	<p>Inserts blank front and back covers.</p> 
<p>Front and back Front Outside</p>	<p>Prints on the outside surface of the front cover and inserts a blank back cover.</p> 
<p>Front and back Front Inside</p>	<p>Prints on the inside surface of the front cover and inserts a blank back cover.</p> 
<p>Front and back Front Outside Front Inside</p>	<p>Prints on both sides of the front cover and inserts a blank back cover.</p> 

— continued

Check Box Selection	Cover Insertion Type
<p>Front and back Back Inside</p>	<p>Prints on the inside surface of the back cover and inserts a blank front cover.</p> 
<p>Front and back Back Outside</p>	<p>Prints on the outside surface of the back cover and inserts a blank front cover.</p> 
<p>Front and back Back Inside Back Outside</p>	<p>Prints on both sides of the back cover and inserts a blank front cover.</p> 
<p>Front and back Front Outside Front Inside Back Inside Back Outside</p>	<p>Prints on both sides of the front and back covers.</p> 

Printing Covers

- 1 In the **Publishing** tab, click the **Cover mode** icon.

- 2 Select **Front** or **Front and back** to specify the type of covers.
- 3 Select from **Print onto** options if you want to print on the covers.
- 4 In the **Media for cover** list, select the media type or source cassette for the front and back covers. When you choose the media type, a source cassette matching that media type is automatically selected.
- 5 Click **OK** to return to the **Print** dialog box.
- 6 Click **OK** to start printing.

Transparency Interleaving

Transparency interleaving inserts a backing sheet between printed transparencies. The backing sheet, also known as an interleaf, helps keep transparencies clean and prevents them from clinging together. This feature is only available when printing on transparencies supplied from the **Multipurpose tray**. You can print the same content on the backing pages as on the transparencies.

Transparency interleaving cannot be used together with **Cover mode**, **Page insert**, and **Chapter page insert**.

Inserting Backing Sheets Between Transparencies

- 1 In **Basic > Media type**, select **Transparency**. If the **Source** and **Media type** lists have been combined (by a selection in **Device Settings > Compatibility**), **Media type** does not appear. Instead, in the **Source** list select **Auto (Transparency)**.
- 2 In the **Publishing** tab, click the **Transparency interleaving** icon.
- 3 To print the transparency content on the inserted pages also, select the **Print onto backing** check box.
- 4 In the **Media for backing** list, select the media type or source cassette. When you choose the media type, a source cassette matching that media type is automatically selected.
- 5 Click **OK** to return to the **Print** dialog box.
- 6 Click **OK** to start printing.

The printing system's operation panel prompts you to load transparencies into the **Multipurpose tray**, and if necessary, load backing paper into the selected cassette.

Page Insert

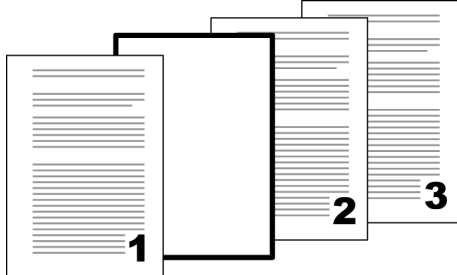
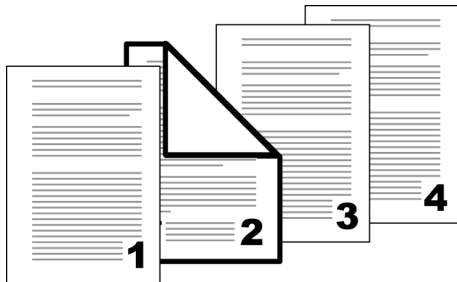
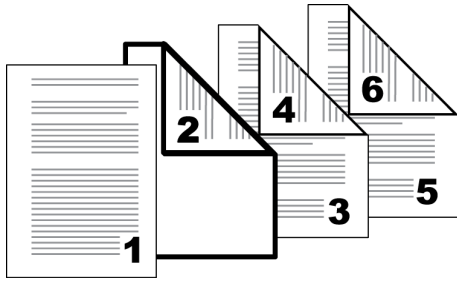
A **Page insert** is a preprinted page or a page of a different paper type that is inserted at specified points in a print job. The inserted page can also be printed

on during the print job. Both sides of the page insert can be printed on by using the duplex unit.

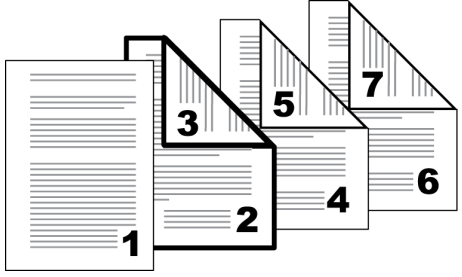
Duplex printing must be selected in the **Basic** tab or **Quick Print** tab in order to print using the **Back** option.

Page insert cannot be used with **Transparency interleaving**.

Page Insertion Options

Check Box Selection	Page Insertion Type
Page insert	Inserts a blank page. 
Page insert Front	Prints on the front side of the inserted page. 
Page insert Back	Prints on the back side of the inserted page. 

— continued

Check Box Selection	Page Insertion Type
Page insert Front Back	Prints on both sides of the inserted page. 

Printing Page Inserts

- 1 In the **Publishing** tab, click the **Page insert** icon.
- 2 To print on both the front and back of the inserted page, select the **Front** and **Back** check boxes.
- 3 In **Insert before pages**, type the page number to insert. A page is inserted between the page number you typed and the page before it.
- 4 From the **Media for page** list, select the media type or source cassette. When you choose the media type, a source cassette matching that media type is automatically selected.
- 5 Click **OK** to return to the **Print** dialog box.
- 6 Click **OK** to start printing.

Chapter Page Insert

When duplex printing, **Chapter page insert** forces the initial page of each chapter in a document to print on the front side of the paper. With this feature, you identify the first page of each chapter, up to 100 chapters.

This feature also turns on the **Collate** feature in the **Quick Print** and **Basic** tabs automatically.

Chapter page insert cannot be used with **Poster** and **Booklet** in the **Layout** tab, or **Transparency Interleaving** in the **Publishing** tab.

This feature is unavailable when **PCL 5e** is selected as the PDL.

Printing with Chapter Page Insert

- 1 In the **Quick Print** or **Basic** tab, select **Duplex**.
- 2 In the **Publishing** tab, click the **Chapter page insert** icon.

- 3** In **Beginning pages for chapters**, enter page numbers from 2 to 999, where each number is the first page of a chapter. You can type individual page numbers separated by commas.

Note: If **Cover Mode**, **Print onto: Front / Outside** and **Front / Inside** are selected, enter page numbers from 3 to 999.

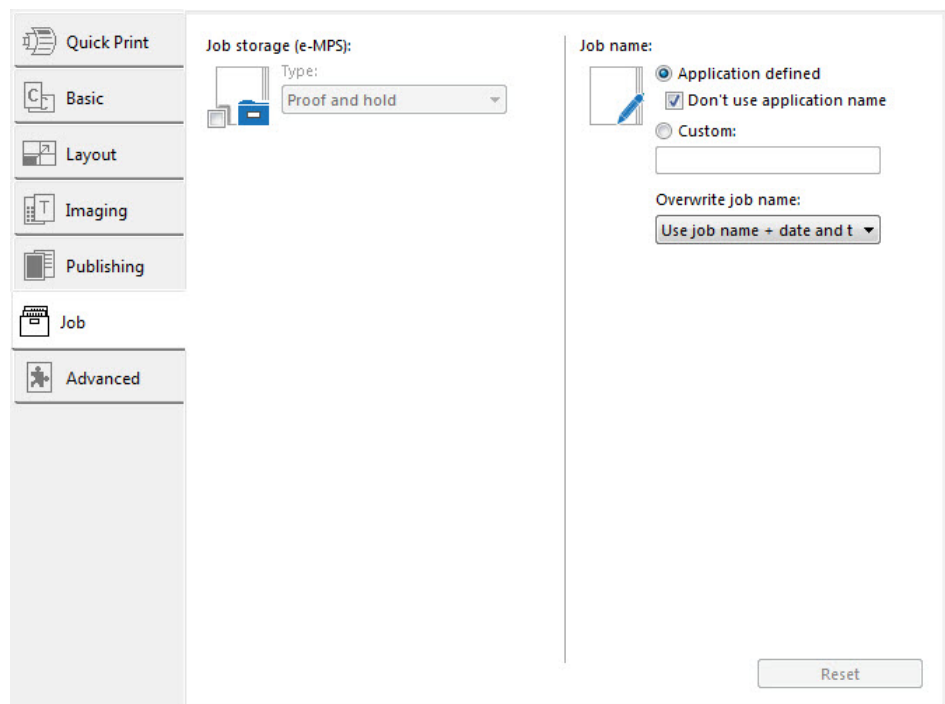
- 4** Click **OK** to return to the **Print** dialog box.
- 5** Click **OK** to start printing.

9 Job

In the **Job** tab, you can store print jobs in the memory installed in the printing system. You can also select a **Job name** to use with Job storage features. You can use this tab to set or change the default settings that apply when you print a document from a Microsoft Windows application. Selections vary by printing system model.

To return to the original settings, click **Reset**. The **Reset** button is available when accessing the printer driver from the application's **Print** dialog box.

An administrator can ensure that all jobs are stored or printed with the selected **Job** tab settings by selecting **Device Settings > Administrator > Lock Settings**, and then selecting **Job tab**.



Job Storage (e-MPS)

Job storage (e-MPS) offers a set of options for saving print jobs in printing system memory, so that you can print or reprint them later. Print jobs can easily be reprinted later using the printing system's operation panel, and printing of sensitive documents can be restricted to approved users.

This feature is a multitier solution that provides advanced print management, directly from the desktop. By storing a job in the printing system, you can print it from the operation panel without sending it again from the computer.

To use the **Job storage (e-MPS)** features, you can set a user name in the **User Settings** dialog box, available in **Device Settings**. If you do not set a user name, the Windows login user name is the default.

Job storage (e-MPS) is unavailable when **Net Manager** is selected in **Device Settings > Administrator > Net Manager**.

Job Storage (e-MPS) options

	Storage location	Access code required	When job is printed	When job is deleted from memory
Quick copy	SD Card	No	When sent from the computer	When printing system is turned off, or storage device is full, or job retention date has passed
Proof and hold	SD Card, RAM disk	No	One print when job is sent; remaining prints later	When printing system is turned off, or job retention date has passed
Private print	SD Card, RAM disk	Yes	When access code is entered at operation panel	When printing system is turned off, or after printing, or job retention date has passed
Job storage	SD Card	Optional	When printed from operation panel	When manually deleted

Quick Copy

Quick copy is a **Job storage (e-MPS)** option that prints all copies of a print job and stores the job temporarily on the storage device for reprinting later. This feature is available when a storage device is installed and selected in **Device Settings**.

Quick copy is useful for printing the job again later in the day when you need additional copies at short notice. You can set the number of additional copies and print the job from the printing system's operation panel without sending the job again from the computer.

The number of **Quick copy** or **Proof and hold** jobs that can be stored is set at the printing system's operation panel. When the designated number of jobs is reached, older jobs are replaced by new jobs. All **Quick copy** jobs are stored on the storage device after printing. Jobs are deleted when the printing system is turned off or the job retention date has passed. You can manually delete a job at the operation panel.

Warning: A print job replaces a job on the storage device having the same user name and job name. To prevent this, select **Use job name + date and time** under **Overwrite job name**.

Note: If you are using this feature with an SD card, clear the **RAM disk** check box in **Device Settings**. The RAM disk settings in the device must also be turned off.

Printing a Quick Copy Job

- 1 In the **Job** tab, click the **Job storage (e-MPS)** icon.

- 2 In the **Type** list, select **Quick copy**.
- 3 Click **OK** in all dialog boxes.

Proof and Hold

Proof and hold is a **Job storage (e-MPS)** option that prints one copy of a print job so that you can proof it before printing the remaining copies. This feature is available when a storage device is installed or a RAM disk is set up in the printing system and selected in **Device Settings**.

After the proof copy is printed and checked, remaining copies can be printed from the printing system's operation panel without sending the job again from the computer. If desired, you can change the number of copies printed.

Note: **Proof and hold** is unavailable for some applications such as Microsoft Excel.

The number of **Proof and hold** or **Quick copy** jobs that can be stored is set at the printing system's operation panel. When the designated number of jobs is reached, older jobs are replaced by new jobs. All **Proof and hold** jobs are stored on the storage device after printing. Jobs are deleted when the printing system is turned off or the job retention date has passed. You can manually delete a job at the operation panel.

Warning: A print job can replace a job on the storage device having the same user name and job name. To prevent this, select **Use job name + date and time** under **Overwrite job name**.

Printing a Proof and Hold Job

- 1 In the **Basic** tab, select the number of copies to be printed.
- 2 In the **Job** tab, click the **Job storage (e-MPS)** icon.
- 3 In the **Type** list, select **Proof and hold**.
- 4 Click **OK** in all dialog boxes.

Private Print

Private print is a **Job storage (e-MPS)** option that saves jobs on the storage device or in RAM disk memory for printing until a four-digit access code is entered. When the storage device reaches maximum capacity and a new job is sent to be stored, the oldest stored job is replaced by the new job. **Private print** jobs are deleted when the printing system is reset or turned off, or when the job retention date has passed. If you do not want the job deleted, select the **Job storage** feature.

When sending a sensitive document to the printing system, a user must type a four-digit access code, which is attached to the print job along with the **Job name** and **User name**. You can also select a prompt option for typing the access code. The job is not printed until a user enters the access code at the printing system's operation panel. After the job is printed, it is removed from printing system memory.

The number of **Private print** jobs that can be stored is limited only by the storage capacity of the storage device. You can manually delete a job at the operation panel.

Warning: A print job can replace a job on the storage device having the same user name and job name. To prevent this, select **Use job name + date and time** under **Overwrite job name**.

Storing a Private Print Job

- 1 In the **Job** tab, click the **Job storage (e-MPS)** icon.
- 2 In the **Type** list, select **Private print**.
- 3 Select a method for choosing an access code:

When you want to use the same access codes for print jobs, clear **Prompt for access code**, and then type four numbers in the **Specify access code** box.

When you want to use different access codes for print jobs, select **Prompt for access code**. When you click **OK** in the **Print** dialog box, type the access code in the **Private Print** dialog box that appears.
- 4 Click **OK** in all dialog boxes.

Job Storage

Job storage is a **Job storage (e-MPS)** option that stores a print job permanently on the storage device for printing later. You also have the option of protecting the print job from unauthorized printing by using an access code. This feature is available when a storage device is installed and selected in **Device Settings**.

Job storage is useful for jobs that need to be available for printing at any time, even if the printing system has been turned off and turned on again. **Job storage** jobs can only be removed manually from printing system memory.

If desired, you can attach a four-digit access code to a **Job storage** job, so that you can print a job without anyone else seeing it, or restrict printing to approved users. When the access code is used, the job is not printed until a user prints it at the printing system's operation panel. After the job is printed, it remains in printing system memory.

The number of **Job storage** jobs that can be stored is limited only by the storage capacity of the storage device. You can manually delete a job at the operation panel.

Warning: A print job can replace a job on the storage device having the same user name and job name. To prevent this, select **Use job name + date and time** under **Overwrite job name**.

Note: If you are using this feature with an SD card, clear the **RAM disk** check box in **Device Settings**. The RAM disk settings in the device must also be turned off.

Storing a Job Storage Job

- 1 In the **Job** tab, select the **Job storage (e-MPS)** icon.
- 2 In the **Type** list, select **Job storage**.
- 3 Select a method for choosing an access code:
When you want to use the same access codes for print jobs, clear **Prompt for access code**, and then type four numbers in the **Specify access code** box.
When you want to use different access codes for print jobs, select **Prompt for access code**. When you click **OK** in the **Print** dialog box, type the access code in the **Job Storage** dialog box that appears.
- 4 Click **OK** in all dialog boxes.

User Login

User login provides job restriction by user, in contrast to the **Job accounting** feature, which assigns privileges by division or department. Selections vary by printing system model. This feature appears in the **Job** tab when **Use specific name** is selected in **Device Settings > Administrator > User Login**.

In the **Job** tab, you can change the name and password temporarily for your print job. This does not change the default name and password that were set in **Device Settings**.

Printing with User Login

- 1 In the **Job** tab, under **User login**, click **Settings**.
- 2 In the **Identity Settings** dialog box, type a name and password.
- 3 You can click **Reset** to restore the default values.
- 4 Click **OK** in all dialog boxes.

Job Accounting

Job accounting gives an administrator control of a printing system. Selections vary by printing system model. With **Job accounting**, account IDs (identification numbers) can be assigned to users or departments. This feature appears in the **Job** tab when **Use specific account ID** is selected in **Device Settings > Administrator > Job Accounting**.

In the **Job** tab, you can change the account ID temporarily for your print job. This does not change the default account ID that was set in **Device Settings**.

Printing with Job Accounting

- 1 In the **Job** tab, under **Job accounting**, click **Settings**.
- 2 In the **Identity Settings** dialog box, type an account ID.

- 3 You can click **Reset** to restore the default value.
- 4 Click **OK** in all dialog boxes.

Job Name

A **Job name** is a unique identifier for each print job. It helps you find and print your job from the printing system's operation panel. When you send a print job using one of the **Job storage (e-MPS)** options, you can assign a custom name to the job or use the name of the application file.

For Microsoft Word and PowerPoint, you can choose to include or omit the application name from the application defined **Job name**. You can also ensure that jobs in printing system memory are not replaced by new jobs having the same **Job name**.

Don't Use Application Name

Don't use application name is an option to remove the application name from the job name in job storage features. By selecting **Don't use application name**, the file name you choose appears clearly in the job list. This feature is applicable only when printing from Microsoft Word or PowerPoint.

Overwrite Job Name

Overwrite job name is an option to ensure that a saved print job is not replaced in printing system memory by a new job having the same **Job name**. If a user sends two print jobs with the same **User name** and **Job name**, the second job replaces the first job without any prompt. To prevent this, **Overwrite job name** can automatically change the **Job name** by adding the date and time the job is sent. This feature also helps you to track when print jobs were sent from the computer.

The selected option applies to a **Job name** with either **Application defined** or **Custom** selected. **Overwrite job name** options include:

Replace existing file

This option lets the current print job replace an existing job in printing system memory, if a job with the same **User name** and **Job name** exists.

Use job name + date and time

This option adds the current date and time to the end of the **Job name**. The previous print job with the same job name remains in the printing system memory.

Selecting a Job Name

You can select a **Job name** to use with **Job storage (e-MPS)** features, so that you can find your job in the job list displayed on the printing system's operation panel. The selected **Job name** is saved with the print job when the job is sent to printing system memory.

- 1 In **Job > Job name**, select a name:

Application defined

This option uses the name of the application document as the **Job name**. For Microsoft Word or PowerPoint documents, selecting **Don't use application name** removes the name of the application so that only the document name appears as the **Job name**.

Custom

This option uses a unique name for each job. Type a name in the box, to a maximum of 79 characters.

- 2** Select an **Overwrite job name** option in case a job already exists in printing system memory with the same **Job name**:

Replace existing file

If a job with the same **User name** and **Job name** exists, the current print job replaces an existing job in printing system memory.

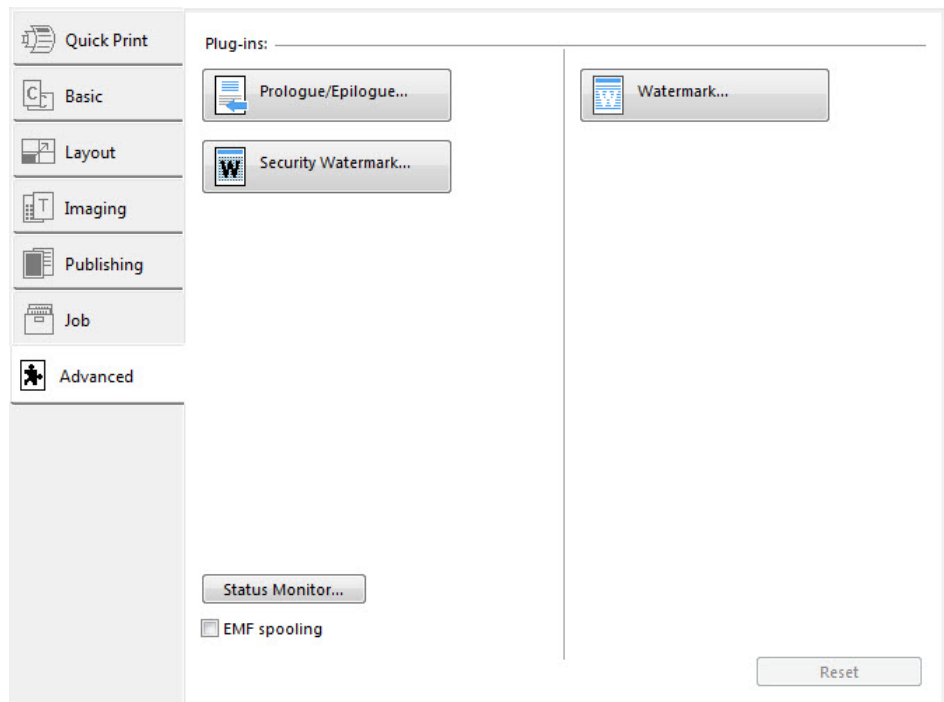
Use job name + date and time

Adds the current date and time to the end of the **Job name**.

10 Advanced

In the **Advanced** tab, you can choose special features that extend the capabilities of the printing system.

Clicking **Reset** sets the **EMF spooling** check box back to the last setting you made in the printer driver's **Printing Preferences**. The **Reset** button is available when accessing the printer driver from the application's **Print** dialog box.



Prologue/Epilogue

With **Prologue/Epilogue**, you can insert a command file at the beginning of a print job or at the end. The command file uses programming commands from the printer resident PRESCRIBE language. The **Product Library** disk includes a PRESCRIBE command language reference guide.

A command file is a set of instructions the printing system interprets to produce a given output. For example, a **Prologue/Epilogue** command file may contain a macro that places a graphic object such as a logo at the top of a letterhead document. Or a heading can be added to carbon copies when using the **Carbon copies** feature in the **Basic** tab.

A **Prologue/Epilogue** file must be available on your computer before it can be added to a print job. To create this file, use a text editor like Windows Notepad. You can edit a **Prologue/Epilogue** file on your computer by clicking **Edit**. Editing and saving a command file replaces the contents of the existing local or network file.

You can remove a **Prologue/Epilogue** file from the list by selecting the file and clicking **Delete**. Only the file name is removed from the command file list. The file itself is not deleted, but remains on the network or local computer.

Insertion Point Options

The insertion point is the location in the print job where the selected **Prologue/Epilogue** command file is processed by the printing system. Each file in the list can be assigned only one insertion point.

Note: The **Start of the page** and **End of the page** insertion point options are available only when **PCL 5e** is selected as the PDL.

Unassigned

The selected command file is not inserted into the print job. This selection can be used when you are working with multiple command files and want to use some but not others. Select **Unassigned** for the command files you do not want to use in the print job.

Beginning of the print job

The command file is inserted as the first page of the print job. The document starts printing on the second page.

End of the print job

The command file is inserted as the last page of the print job, which prints after the last page of the document.

Start of the page

The command file is inserted at the top of each page of the print job.

End of the page

The command file is inserted at the bottom of each page of the print job.

Only on odd pages

If **Start of the page** or **End of the page** is selected, this option can be selected to insert the command file into all odd-numbered pages.

Only on even pages

If **Start of the page** or **End of the page** is selected, this option can be selected to insert the command file into all even-numbered pages.

Pages

If **Start of the page** or **End of the page** is selected, this option can be selected to insert the command file into specified pages. In the text box, type individual page numbers separated by commas, or a page range separated by a hyphen.

Selecting and Assigning a Prologue/Epilogue File

- 1 In **Advanced > Prologue/Epilogue**, click **Browse** to find a **Prologue/Epilogue** file (.TXT, .LOG) and add it to the **Select Prologue/Epilogue file to insert** list.
- 2 Select a file from the list.
- 3 Under **Insertion Point**, select a place to insert the **Prologue/Epilogue** file, or select **Unassigned**.

- 4 Repeat steps 1-3 to include additional files.
- 5 Click **OK**.

Editing a Prologue/Epilogue File

You can edit a **Prologue/Epilogue** file on your computer.

- 1 In **Advanced > Prologue/Epilogue**, select a **Prologue/Epilogue** file name from the list, and then click **Edit**.
- 2 After your text editor opens, make your changes to the file.
- 3 Save the file and exit.

Note: Editing and saving a command file replaces the contents of the existing local or network file.

Deleting a Prologue/Epilogue File

- 1 In **Advanced > Prologue/Epilogue**, select a **Prologue/Epilogue** file name from the list, and then click **Delete**.
- 2 In the delete confirmation box, click **Yes** to accept.

Note: Only the file name is removed from the command file list. The file itself is not deleted, but remains on the network or local computer.

Watermark

A watermark is a recognizable image or pattern that can be placed on a page or throughout a document. You can choose one of the default watermarks, create your own text, or use an image. The preview area of the dialog box shows how the watermark appears on a page. This is useful for making adjustments to the appearance and location of the watermark.

Any watermark can be edited, though a limited number of options can be changed for default watermarks.

If you want to use an image for the watermark, an image file must be available on your computer before it can be added to a print job.

Watermark **Spacing** displays the unit of measurement in inches or millimeters. You can change the **Units** setting in the **User Settings** dialog box, accessed from **Device Settings**.

An administrator can ensure that a watermark is printed on all jobs by selecting **Device Settings > Administrator > Lock Settings**, and then selecting **Watermark**.

Watermark should be turned on before using **Lock Settings**. When **Watermark** is turned off, using **Lock Settings** makes **Watermark** unavailable for all users.

Adding or Editing Watermark Text

- 1 In **Advanced > Watermark**, click **New** to create a custom text watermark.
To edit a default or custom text watermark, select it from the list.
- 2 Under **Watermark name**, type a name, to a maximum of 39 characters. A default watermark cannot be renamed.
- 3 Under **Watermark text**, type your preferred text. This option is unavailable when editing a default text watermark.
- 4 Select the desired font, size, and style of the text.
- 5 Select the color of the watermark text from the list. The options available are black and shades of gray.
- 6 Select the watermark **Count**, to a maximum of 20. In the **Spacing** box, type or select the distance between two or more text watermarks in tenths of an inch or in millimeters.
- 7 Select the position of the text watermark with the **Angle**, **Horizontal**, and **Vertical** boxes.

You can also change the position and angle by clicking the buttons at the bottom of the preview area and then clicking the watermark text. Drag the pointer to move or rotate the watermark text.

The **Rotate around center** check box at the bottom of the dialog box determines the method of rotation for the watermark text. Select **Rotate around center** to position the watermark text with the center of the text as its axis, and clear it to position the watermark text with the left end of the text as its axis.
- 8 Under **Print onto**, choose pages for printing the watermark:
 - All pages**
This option prints the watermark on each document page.
 - First page only**
This option prints the watermark on the first document page.
 - All pages except first page**
This option prints the watermark on all pages after the first page.
 - Only on specified pages**
This option prints the watermark on the page numbers typed in the text box.
 - Outside of front cover**
This option prints the watermark on the front cover. This is available when **Cover mode** is selected in the **Publishing** tab. If **Cover mode** and **Front / Outside** or **Front and back / Outside** are both selected in the **Publishing** tab, **Outside of front cover** is selected automatically.
- 9 Click **Save** to save the watermark.
- 10 Click **OK** in all dialog boxes.

Adding or Editing a Watermark Image

- 1** In **Advanced > Watermark**, click **New** to create a custom image watermark.
To edit a custom image watermark, select it from the list.
- 2** Under **Watermark name**, type a name, to a maximum of 39 characters.
- 3** Under **Watermark image**, click **Browse** to find an image file (Bitmap, JPEG, GIF, PNG) located on your computer.
- 4** Under **Scaling**, increase or reduce the size of the watermark image on the page, between 1 and 1000%, or select **Auto** to fit the entire image in the center of the page.
- 5** Under **Opacity**, select the density of the watermark image, between 1 and 100%.
- 6** Select the position of the watermark image with the **Angle**, **Horizontal**, and **Vertical** boxes, or select **Auto** to fit the entire image in the center of the page.
You can also change the position and angle by clicking the buttons at the bottom of the preview area and then clicking the watermark image. Drag the pointer to move or rotate the watermark image.
The **Rotate around center** check box at the bottom of the dialog box determines the method of rotation for the watermark image. Select **Rotate around center** to position the watermark image with the center of the image as its axis, and clear it to position the watermark image with the left end of the image as its axis.
- 7** Under **Print onto**, choose pages for printing the watermark:
 - All pages**
This option prints the watermark on each document page.
 - First page only**
This option prints the watermark on the first document page.
 - All pages except first page**
This option prints the watermark on all pages after the first page.
 - Only on specified pages**
This option prints the watermark on the page numbers typed in the text box.
 - Outside of front cover**
This option prints the watermark on the front cover. This option is available when **Cover mode** is selected in the **Publishing** tab. If **Cover mode** and **Front / Outside** are both selected in the **Publishing** tab, **Outside of front cover** is selected automatically.
- 8** Click **Save** to save the watermark.
- 9** Click **OK** in all dialog boxes.

Security Watermark

With the **Security Watermark** plug-in, you can print a nearly invisible image or text against a background pattern. The security watermark appears only when the printed page is photocopied. This helps to identify printed pages that should not be photocopied, or to distinguish between original prints and photocopies. Six standard security watermarks are available as text or image, and you can create custom security watermark text.

The **Optional Components Wizard** offers the opportunity to install the **Security Watermark** plug-in following installation of the printer driver.

Security Watermark is available in the **Advanced** tab when **PCL XL** is selected as the PDL.

Any security watermark can be edited, though a limited number of options can be changed for default security watermarks.

For models that support it, a notable security watermark feature is the **Document guard** pattern, which prevents the document from being photocopied, scanned, faxed, or printed from memory. If a scan, fax, or print from memory is attempted, the process is stopped and a message appears on the printing system's operation panel.

For a security watermark to be effective, it must be nearly invisible in a printed page and clearly visible in a photocopied page. Because printing systems and driver settings can vary, you must adjust the density and contrast before printing a security watermark. This adjustment is also recommended when changing the background pattern, replacing the toner or printing system, and after heavy printing activity.

Selecting **Security Watermark** sets these driver features to the following values:

Watermark in the **Advanced** tab is set to **None**.

Resolution in **Imaging > Print Quality > Custom > Custom Quality Settings** is set to **600 dpi**.

Kyocera image refinement in **Imaging > Print Quality > Custom > Custom Quality Settings** is set to **Off**.

EcoPrint in **Quick Print, Basic, or Imaging** is set to **Off**.

Adjustment setting in the **Imaging** tab is set to **None**.

The reverse is also true. If these features are changed, then the **Security Watermark** selection is set to **None**, and cannot be used.

The administrator can ensure that a security watermark is printed on all jobs by selecting **Device Settings > Administrator > Lock Settings**, and then selecting **Security watermark**.

Security watermark should be turned on before using **Lock Settings**. When **Security watermark** is turned off, using **Lock Settings** makes **Security watermark** unavailable for all users.

Adding or Editing a Security Watermark

- 1 In **Advanced > Security Watermark**, click **New** to create a custom security watermark.

To edit a default or custom security watermark, select it from the list.

- 2 Under **Security watermark name**, type a name to a maximum of 39 characters. A default security watermark cannot be renamed.

- 3** Under **Lines of text**, select up to 3 lines of text. This option is unavailable when editing a default security watermark. Select from the following options:

 - None**
This option leaves the line blank.
 - User defined**
This option inserts your text to a maximum of 39 characters.
All other options display date, time, or other job information that is obtained from the computer or printer driver when the job is printed.
- 4** Select the desired font, size, style, and angle of the text.
- 5** Select a design for the security watermark background:

 - Document guard**
The document guard design appears as the security watermark background.
 - Patterns**
Select a design for the security watermark background.
- 6** Under **Density** and **Contrast**, select initial options:

 - Light, Normal, Dark**
Select the shading density of the background pattern.
 - Contrast 1-9**
Select the level of contrast against the background pattern, from lightest to darkest.

These selections may need to be changed after printing a sample page in the next step.
- 7** Click **Print Sample** to print a page displaying all nine contrast options against the selected density. It is recommended to print a sample page for each density option.
- 8** From the printed sheet, find the sample where the security watermark is most nearly invisible.
- 9** In the **Security Watermark** dialog box, select **Density** and **Contrast** options to match the sample chosen in step 8.
- 10** Under **Print onto**, choose pages for printing the security watermark:

 - All pages**
This option prints the security watermark on each document page.
 - First page only**
This option prints the security watermark on the first document page.
 - All pages except first page**
This option prints the security watermark on all pages after the first page.
 - Only on specified pages**

This option prints the security watermark on the page numbers typed in the text box.

Outside of front cover

This option prints the security watermark on the front cover. This option is available when **Cover mode** is selected in the **Publishing** tab. If **Cover mode** and **Front / Outside** are both selected in the **Publishing** tab, **Outside of front cover** is selected automatically.

- 11** Select **Print as footer** if you want the first available line of watermark text to be printed at the bottom of the page. Click an icon to select the page position. This option is useful because the security watermark itself is not normally visible on the printed page.
- 12** Select **Overprint** for applications such as Microsoft PowerPoint and Internet Explorer where the document content fills the entire page. The security watermark is printed over the document data so that it can appear in a photocopy. When editing an image, or if **GDI compatible mode** is selected in the **Page Description Languages (PDL)** dialog box, **Overprint** is selected automatically.
- 13** Click **Save** to save the security watermark.
- 14** Click **OK** in all dialog boxes.

Status Monitor Notification

The **Status Monitor** displays printing system status during printing. You can also set up sound and speech notifications for printing system events.

You can start a status monitor for each supported printing system. More than one status monitor can be displayed at one time.

Setting Status Monitor Notification

- 1** In the **Advanced** tab, click **Status Monitor**.
- 2** In the **Status Monitor Notification** dialog box, select the **Enables event notification** check box.
- 3** To add sound or speech notification, select an event from the **Available events** list:
 - Cover open**
 - Paper jam**
 - Add paper**
 - Sleep**
 - Add toner**
 - Toner low**
 - Not connected**
 - Printing completed**
 - Others**

- 4 Under **Sound file / Text to Speech**, click to the right of the chosen event, and then:
 - To add a sound file, type the location of a sound file (.WAV), or click **Browse** to find a sound file located on your computer.
 - To add speech, type your preferred text, up to 260 characters. The Microsoft **Text to Speech** feature reads your typed text and plays it back in a spoken voice.
- 5 To add sound or speech to other events, repeat steps 3 and 4.
- 6 Click **OK**.

Viewing Status Monitor

- 1 You can view information about the print job and the printing system in the status monitor:
 - The job tab displays information about each print job. To cancel a job, right-click on the job and click **Cancel**.
 - The paper source tab displays information about each cassette and the **Multipurpose tray**.
 - The toner tab displays the toner level.
 - The alert tab displays **Ready** or event information. For multiple events, click each event to view details.
- 2 You can hide or show details by clicking the arrow.
- 3 To display a list of options, click the tools icon, and select available options:
 - Command Center RX**
For a network connection, opens a web browser to display the printing system's home page. This option is unavailable for a USB connection.
 - Notification**
Opens the **Status Monitor Notification** dialog box.
 - www.kyoceradocumentsolutions.com**
Opens a web browser to the **KYOCERA Document Solutions** home page.
 - Exit**
Closes the status monitor.

EMF Spooling

EMF (Enhanced MetaFile) is a spool file format used in printing by the Microsoft Windows operating system. When a print job is sent from an application, it is transferred to the spool file. The application writes to and the printer driver reads from the spool file simultaneously. For multiple or large documents, this quickly returns application control to the user while the printer is still printing the document.

Note: If **Data passthrough** is selected in the **Page Description Languages (PDL)** dialog box, **EMF spooling** is unavailable.

Selecting EMF Spooling

- 1 In the **Advanced** tab, select the **EMF Spooling** check box.
- 2 Click **OK**.

Enable Client Profile

Client profile refers to profile settings saved on a client computer. You have the choice to use your local profiles or the server profiles. This feature is intended for the client computer in a client/server environment.

In the **Advanced** tab, clear the **Enable client profile** check box to select profiles from the server to apply to print jobs created by the driver. Server profiles are read-only.

Select the **Enable client profile** check box for using custom profiles locally in the driver.

KYOCERA Document Solutions America, Inc.**Headquarters**

225 Sand Road,
Fairfield, New Jersey 07004-0008, USA
Phone: +1-973-808-8444
Fax: +1-973-882-6000

Latin America

8240 NW 52nd Terrace Dawson Building, Suite 100
Miami, Florida 33166, USA
Phone: +1-305-421-6640
Fax: +1-305-421-6666

KYOCERA Document Solutions Canada, Ltd.

6120 Kestrel Rd., Mississauga, ON L5T 1S8,
Canada
Phone: +1-905-670-4425
Fax: +1-905-670-8116

KYOCERA Document Solutions**Mexico, S.A. de C.V.**

Calle Arquimedes No. 130, 4 Piso, Colonia Polanco
Chapultepec, Delegacion Miguel Hidalgo,
Distrito Federal, C.P. 11560, México
Phone: +52-555-383-2741
Fax: +52-555-383-7804

KYOCERA Document Solutions Brazil, Ltda.

Alameda África, 545, Pólo Empresarial Consbrás,
Tamboré, Santana de Parnaíba, State of São Paulo, CEP
06543-306, Brazil
Phone: +55-11-2424-5353
Fax: +55-11-2424-5304

KYOCERA Document Solutions Chile SpA

Jose Ananias 505, Macul. Santiago, Chile
Phone: +562-2350-7000
Fax: +562-2350-7150

KYOCERA Document Solutions**Australia Pty. Ltd.**

Level 3, 6-10 Talavera Road North Ryde N.S.W, 2113,
Australia
Phone: +61-2-9888-9999
Fax: +61-2-9888-9588

KYOCERA Document Solutions**New Zealand Ltd.**

Ground Floor, 19 Byron Avenue, Takapuna, Auckland,
New Zealand
Phone: +64-9-415-4517
Fax: +64-9-415-4597

KYOCERA Document Solutions Asia Limited

Unit 3 & 5, 16/F., Mita Centre, 552-566, Castle Peak Road
Tsuen Wan, New Territories, Hong Kong
Phone: +852-2496-5678
Fax: +852-2610-2063

KYOCERA Document Solutions**(China) Corporation**

8F, No. 288 Nanjing Road West, Huangpu District,
Shanghai, 200003, China
Phone: +86-21-5301-1777
Fax: +86-21-5302-8300

KYOCERA Document Solutions**(Thailand) Corp., Ltd.**

335 Ratchadapisek Road, Wongsawang, Bangsue,
Bangkok 10800,
Thailand
Phone: +66-2-586-0333
Fax: +66-2-586-0278

KYOCERA Document Solutions**Singapore Pte. Ltd.**

12 Tai Seng Street #04-01A,
Luxasia Building, Singapore 534118
Phone: +65-6741-8733
Fax: +65-6748-3788

KYOCERA Document Solutions**Hong Kong Limited**

Unit 1,2,4,6,8 & 10, 16/F., Mita Centre, 552-566, Castle
Peak Road Tsuen Wan, New Territories, Hong Kong
Phone: +852-3582-4000
Fax: +852-3185-1399

KYOCERA Document Solutions**Taiwan Corporation**

6F., No.37, Sec. 3, Minquan E. Rd.,
Zhongshan Dist., Taipei 104, Taiwan R.O.C.
Phone: +886-2-2507-6709
Fax: +886-2-2507-8432

KYOCERA Document Solutions Korea Co., Ltd.

#3F Daewoo Foundation Bldg 18, Toegyero, Jung-gu,
Seoul, Korea
Phone: +822-6933-4050
Fax: +822-747-0084

KYOCERA Document Solutions**India Private Limited**

Second Floor, Centrum Plaza, Golf Course Road,
Sector-53, Gurgaon, Haryana 122002, India
Phone: +91-0124-4671000
Fax: +91-0124-4671001

KYOCERA Document Solutions Europe B.V.

Bloemlaan 4, 2132 NP Hoofddorp,
The Netherlands
Phone: +31-20-654-0000
Fax: +31-20-653-1256

KYOCERA Document Solutions Nederland B.V.

Beechavenue 25, 1119 RA Schiphol-Rijk,
The Netherlands
Phone: +31-20-5877200
Fax: +31-20-5877260

KYOCERA Document Solutions (U.K.) Limited

Eldon Court, 75-77 London Road,
Reading, Berkshire RG1 5BS,
United Kingdom
Phone: +44-118-931-1500
Fax: +44-118-931-1108

KYOCERA Document Solutions Italia S.p.A.

Via Monfalcone 15, 20132, Milano, Italy,
Phone: +39-02-921791
Fax: +39-02-92179-600

KYOCERA Document Solutions Belgium N.V.

Sint-Martinusweg 199-201 1930 Zaventem,
Belgium
Phone: +32-2-7209270
Fax: +32-2-7208748

KYOCERA Document Solutions France S.A.S.

Espace Technologique de St Aubin
Route de l'Orme 91195 Gif-sur-Yvette CEDEX,
France
Phone: +33-1-69852600
Fax: +33-1-69853409

KYOCERA Document Solutions Espana, S.A.

Edificio Kyocera, Avda. de Manacor No.2,
28290 Las Matas (Madrid), Spain
Phone: +34-91-6318392
Fax: +34-91-6318219

KYOCERA Document Solutions Finland Oy

Atomitie 5C, 00370 Helsinki,
Finland
Phone: +358-9-47805200
Fax: +358-9-47805390

KYOCERA Document Solutions Europe B.V., Amsterdam (NL) Zürich Branch

Hohlstrasse 614, 8048 Zürich,
Switzerland
Phone: +41-44-9084949
Fax: +41-44-9084950

KYOCERA Bilgitas Document Solutions Turkey A.S.

Gülbahar Mahallesi Otello Kamil Sk. No:6 Mecidiyeköy
34394 Şişli İstanbul, Turkey
Phone: +90-212-356-7000
Fax: +90-212-356-6725

KYOCERA Document Solutions Deutschland GmbH

Otto-Hahn-Strasse 12, 40670 Meerbusch,
Germany
Phone: +49-2159-9180
Fax: +49-2159-918100

KYOCERA Document Solutions Austria GmbH

Altmannsdorferstraße 91, Stiege 1, 2. OG, Top 1, 1120,
Wien, Austria
Phone: +43-1-863380
Fax: +43-1-86338-400

KYOCERA Document Solutions Nordic AB

Esbogatan 16B 164 75 Kista, Sweden
Phone: +46-8-546-550-00
Fax: +46-8-546-550-10

KYOCERA Document Solutions Norge Nuf

Olaf Helsetsv. 6, 0619 Oslo, Norway
Phone: +47-22-62-73-00
Fax: +47-22-62-72-00

KYOCERA Document Solutions Danmark A/S

Ejby Industrivej 60, DK-2600 Glostrup,
Denmark
Phone: +45-70223880
Fax: +45-45765850

KYOCERA Document Solutions Portugal Lda.

Rua do Centro Cultural, 41 (Alvalade) 1700-106 Lisboa,
Portugal
Phone: +351-21-843-6780
Fax: +351-21-849-3312

KYOCERA Document Solutions South Africa (Pty) Ltd.

KYOCERA House, Hertford Office Park,
90 Bekker Road (Cnr. Allandale), Midrand, South Africa
Phone: +27-11-540-2600
Fax: +27-11-466-3050

KYOCERA Document Solutions Russia LLC.

Building 2, 51/4, Schepkina St., 129110, Moscow,
Russia
Phone: +7(495)741-0004
Fax: +7(495)741-0018

KYOCERA Document Solutions Middle East

Dubai Internet City, Bldg. 17,
Office 157 P.O. Box 500817, Dubai,
United Arab Emirates
Phone: +971-04-433-0412

KYOCERA Document Solutions Inc.

2-28, 1-chome, Tamatsukuri, Chuo-ku
Osaka 540-8585, Japan
Phone: +81-6-6764-3555
<http://www.kyoceradocumentsolutions.com>