

CARTELLA COLORI GENERALE
GENERAL COLOURS SAMPLES CARD

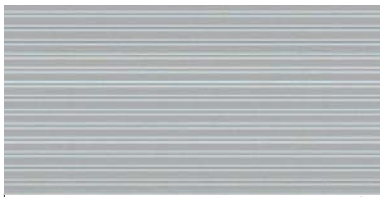
LEGNI | WOODS

○ = MELAMINICI | MELAMINE

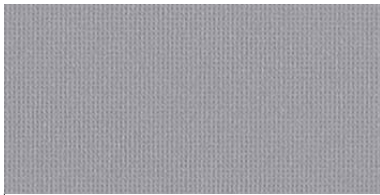
△ = 3D-FOIL

● = FENIX^{NTM}

▲ = ESSENZE DI LEGNO | WOOD ESSENCES



COD. 00
ALLUMINIO MILLERIGHE | ALUMINIUM STRIPED EFFECT
Enosi Evo



COD. 01
ARGENTO GOLF | GOLF SILVER
Oxi - 5th Element - Up - Contenitori Universali Evo - Nice - Oyo - Oxi Color



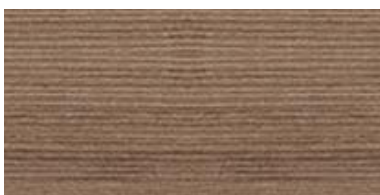
COD. 03
ROVERE | OAK
Oxi - 5th Element - Up - Contenitori Universali Evo - Point - Oyo - Delta Evo - Fil Rouge - Oxi Color



COD. 04
ROVERE GREY | GREY OAK
5th Element - Up - Contenitori Universali Evo - Point - Oyo - Delta Evo



COD. 06
NOCE PAVIA | PAVIA WALNUT
Oxi - 5th Element - Up - Contenitori Universali Evo - Point - Oyo - Delta Evo - Oxi Color



COD. 08
OLMO | ELM
E.O.S.



COD. 11
GIALLO FRESIA | FREESIA YELLOW
5th Element - Contenitori Universali Evo - Oyo



COD. 12
OLMO GREY | GREY ELM
Iulio - Jera - I Meet - Oyo



COD. 14
LAVA | LAVA
Iulio



COD. 15
BIANCO NATUR MAT | NATUR MAT WHITE
Nice - Iulio Hg



COD. 16
NERO NATUR MAT | NATUR MAT BLACK
Nice - Iulio Hg



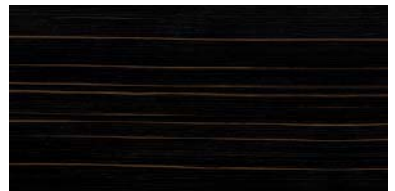
COD. 20
MUSCHIO | MOSS GREEN
Fil Rouge - Oxi Color



COD. 23
NERO PURO | PURE BLACK
Elite



COD. 24
GRIGIO LONDRA | LONDON GREY
Elite



COD. 25
EBANO CLASSICO | CLASSIC EBONY
Elite



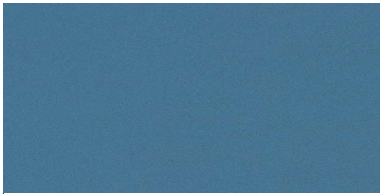
COD. 26
OLMO MODERNO | MODERN ELM
Elite



COD. 29
NOCE ITALIA | ITALY WALNUT
Nice - Enosi Evo - Oyo



COD. 30
NOCE BALI | BALI WALNUT
Iulio - Jera - I Meet - Oyo



COD. 32
AZZURRO SKY | SKY BLUE ○
 5th Element - Contenitori Universali Evo - Oyo



COD. 33
AMARANTO | AMARANTH ○
 5th Element - Contenitori Universali Evo- Delta Evo - Oyo



COD. 37
NOCE PACIFIC | PACIFIC WALNUT △
 Enosi Evo - Oyo



COD. 44
STONE GREY | STONE GREY ○ △
 Oxi - 5th Element - Up - Contenitori Universali Evo - Point - Oyo - Delta Evo - Jera - I Meet - Fil Rouge - Oxi Color



COD. 48
BIANCO HIGH GLOSS | HIGH GLOSS WHITE △
 Nice - Iulio Hg



COD. 49
NERO HIGH GLOSS | HIGH GLOSS BLACK △
 Nice - Iulio Hg



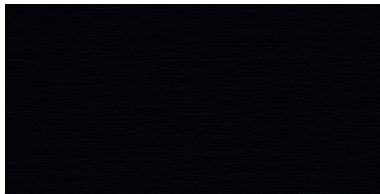
COD. 50
ZEBRANO HIGH GLOSS | HIGH GLOSS ZEBRAWOOD △
 Nice



COD. 51
NERO | BLACK ○
 Fil Rouge Oxi Color



COD. 52
FRASSINO BROWN | BROWN ASH △
 Iulio - Jera - I Meet - Oyo



COD. 53
NERO | BLACK ○
 Elite



COD. 55
ANTRACITE | ANTHRACITE ○
 5th Element - Contenitori Universali Evo - Point - Oyo - Delta Evo - Iulio - Iulio Hg - E.O.S. - Jera - I Meet



COD. 56
NERO | BLACK △
 Fil Rouge



COD. 61
ROVERE AFRO | AFRICAN OAK △
 Enosi Evo - I Meet - Oyo



COD. 63
PIOPPO MORO | DARK POPLAR ○
 Elite



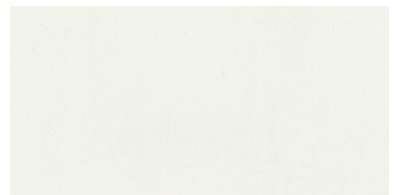
COD. 64
PIOPPO LIGHT | LIGHT POPLAR ○
 Elite



COD. 67
TEAK SAMOA | SAMOA TEAK △
 Iulio - I Meet - Oyo



COD. 68
BIANCO | WHITE ○
 Contenitori Universali Evo - Fil Rouge - Oxi Color



COD. 69
BIANCO BR. | BR. WHITE ○ △
 Oxi - 5th Element - Up - Contenitori Universali Evo - Point - Nice - Oyo - Delta Evo - Iulio - Iulio Hg - Enosi Evo - I Meet



COD. 70
CACAO | CACAO
E.O.S.



COD. 91
ACERO | MAPLE
Enosi Evo - Oyo



COD. 96
VERDE BOSCO | WOOD GREEN



5th Element - Contenitori Universali Evo - Oyo

VETRI | GLASS □



COD. 10 □
NERO | BLACK
5th Element - Nice - Iulio Hg - Enosi Evo - I Meet
- Oyo - Elite



COD. 74 □
ROSSO RUBINO | RUBY RED
5th Element - E.O.S. - Enosi Evo - I Meet



COD. 79 □
BIANCO | WHITE
Oxi - 5th Element - Oyo



COD. 71 □
GRIGIO LONDRA | LONDON GREY
Elite



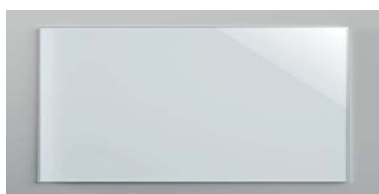
COD. 75 □
PISTACCHIO | PISTACHIO
E.O.S. - Enosi Evo - I Meet



COD. 99 □
BIANCO SATINATO | SATINED WHITE
Contenitori Universali Evo- Nice - Delta Evo - Iulio
- E.O.S.



COD. 72 □
TORTORA | GREY BEIGE
Oxi - 5th Element - Iulio - E.O.S. - I Meet - Oyo



COD. 78 □
BIANCO EXTRA | EXTRA WHITE
Nice - Iulio Hg - Enosi Evo

METALLI | METALS

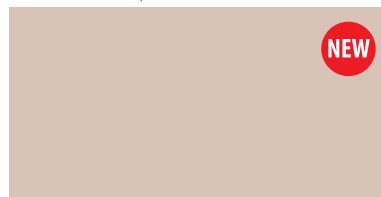


COD. AN 02
ANTRACITE | ANTHRACITE
5th Element - Contenitori Universali Evo - Oyo
Delta Evo - I Meet



COD. SL 01
SILVER LIGHT | SILVER LIGHT
Iulio Hg

COLORI PASTELLO pastel colours



COD. CP 01 (Pantone 4755 C)
CIPRIA | POWDER PINK
Oxi Color



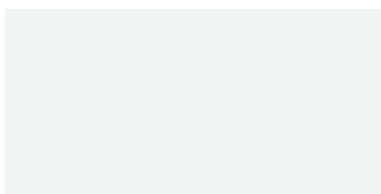
COD. AR 02
ARGENTO | SILVER
Oxi - 5th Element - Contenitori Universali Evo - Oyo
- Oxi Color



COD. NR 02
NERO | BLACK
Enosi Evo - Oyo



COD. GL 01 (Pantone 600 C)
GIALLO | YELLOW
Oxi Color



COD. BI 02 (RAL 9016)
BIANCO | WHITE
Oxi - 5th Element - Contenitori Universali Evo
Delta Evo - Enosi Evo - Oyo - Fil Rouge - Oxi Color



COD. NR 03
NERO (OPACO) | (MATT) BLACK
Fil Rouge - Oxi Color



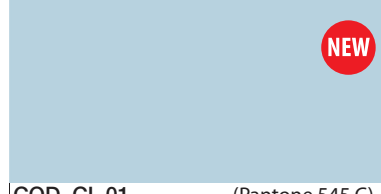
COD. VR 02 (Pantone 4178 C)
VERDE | GREEN
Oxi Color



COD. CR 01
CROMATO | CHROMED
5th Element - Enosi Evo - I Meet - Oyo



COD. SG 01
STONE GREY | STONE GREY
Oxi - 5th Element - Contenitori Universali Evo - Oyo
Delta Evo - I Meet - Fil Rouge - Oxi Color



COD. CL 01 (Pantone 545 C)
CELESTE | LIGHT BLUE
Oxi Color

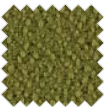


COD. IG 01
INOX GREY | GREY INOX
Iulio - Oyo




COD. VR 01
MUSCHIO | MOSS GREEN
Fil Rouge - Oxi Color

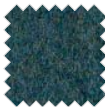
(*) RIEPILOGO CODICI TAPPEZZERIA | FABRICS CODES

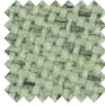
CATEGORY	CODE	(*)	COLORE	COLOUR
CAT. B				
CREPE				
	---	---	522	GRIGIO PERLA LIGHT GREY
	---	---	523	GRIGIO SCURO DARK GREY
	---	---	524	NERO BLACK
	---	---	525	AVORIO IVORY
	---	---	526	NOCCIOLA HAZEL
	---	---	527	MALTO MALT
	---	---	528	VERDE ACIDO ACID GREEN
	---	---	529	PETROLIO PETROLEUM
	---	---	530	ARTICO ARCTIC
	---	---	531	CELESTE LIGHT BLUE
	---	---	532	COBALTO COBALT
	---	---	533	BLU BLUE
	---	---	534	GIALLO YELLOW
	---	---	535	ARANCIO ORANGE
	---	---	536	VINACCIO WINE RED
---	---	537	ROSSO RED	
---	---	538	PRUGNA PLUM	

CATEGORY	CODE	(*)	COLORE	COLOUR
CAT. D				
STRETCH				
	---	---	585	AVORIO IVORY
	---	---	586	GRIGIO GREY
	---	---	587	ANTRACITE ANTHRACITE
	---	---	588	NERO BLACK
	---	---	589	TORTORA GREY BEIGE
	---	---	590	MARRONE BROWN
	---	---	591	VERDE ACIDO ACID GREEN
	---	---	592	VERDE BOSCO WOOD GREEN
	---	---	593	AZZURRO SKY SKY BLUE
	---	---	594	BLU BLUE
	---	---	595	GIALLO FRESIA FREESIA YELLOW
	---	---	596	ARANCIO ORANGE
	---	---	597	ROSSO RED
---	---	598	AMARANTO AMARANTH	

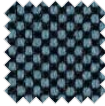
CATEGORY	CODE	(*)	COLORE	COLOUR
MELANGE				
	---	---	603	CENERE ASH
	---	---	604	GRIGIO GREY
	---	---	605	FUMO SMOKE
	---	---	606	TORTORA GREY BEIGE
	---	---	607	NOCCIOLA HAZEL
	---	---	608	VERDE ACIDO ACID GREEN
	---	---	609	MUSCHIO MOSS GREEN
	---	---	610	VERDONE DARK GREEN
	---	---	611	ARTICO ARCTIC
	---	---	612	AZZURRO AZURE
	---	---	613	COBALTO COBALT
	---	---	614	PETUNIA PETUNIA
	---	---	615	RIBES CURRANT
---	---	616	GRANATA GARNET	

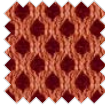
CATEGORY	CODE	(*)	COLORE	COLOUR
TREVI				
	---	---	621	GRIGIO GREY
	---	---	622	PORFIDO PORPHYRY
	---	---	623	GRIGIO SCURO DARK GREY
	---	---	624	NERO BLACK
	---	---	625	TORTORA GREY BEIGE
	---	---	626	NOCCIOLA HAZEL
	---	---	627	MARRONE BROWN
	---	---	628	VERDE ACIDO ACID GREEN
	---	---	629	PETROLIO PETROLEUM
	---	---	630	CELESTE LIGHT BLUE
	---	---	631	PERVINCA PERIWINKLE
	---	---	632	BLU BLUE
	---	---	633	OCRA OCHER
	---	---	634	MATTONE BRICK RED
	---	---	635	PETUNIA PETUNIA
	---	---	636	ROSSO RED
---	---	637	AMARANTO AMARANTH	

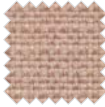
CATEGORY	CODE	(*)	COLORE	COLOUR
CAT. E				
LANA				
	---	---	642	GRIGIO CHIARO LIGHT GREY
	---	---	643	GRIGIO SCURO DARK GREY
	---	---	644	FUMO SMOKE
	---	---	645	TORTORA GREY BEIGE
	---	---	646	MARRONE BROWN
	---	---	647	VERDE ACIDO ACID GREEN
	---	---	648	MUSCHIO MOSS GREEN
	---	---	649	ARTICO ARCTIC
	---	---	650	MALIBU' MALIBU
	---	---	651	PERVINCA PERIWINKLE
	---	---	652	AVIO NAVY BLUE
	---	---	653	RUGGINE RUSSET
	---	---	654	MATTONE BRICK RED
---	---	655	FUOCO FIRE RED	

CATEGORY	CODE	(*)	COLORE	COLOUR
CHILI BY GABRIEL				
	---	---	675	GRIGIO CHIARO LIGHT GREY
	---	---	676	ANTRACITE ANTHRACITE
	---	---	677	AVORIO POLVERE POWDER IVORY
	---	---	678	TORTORA GREY BEIGE
	---	---	679	SALVIA SAGE
	---	---	680	FIENO HAY
	---	---	681	ACQUAMARINA ACQUAMARINE
	---	---	682	AVIO NAVY BLUE
	---	---	683	SENAPE MUSTARD
	---	---	684	CIPRIA POWDER PINK
---	---	685	VINACCIO WINE RED	

CATEGORY	CODE	(*)	COLORE	COLOUR
CAT. F				
TAYLOR BY FLUKSO				
	---	---	689	MARNA MARL
	---	---	690	GRIGIO SCURO DARK GREY
	---	---	691	GRAFITE GRAPHITE
	---	---	692	NERO BLACK
	---	---	693	TORTORA GREY BEIGE
	---	---	694	TABACCO TOBACCO
	---	---	695	OLIVA OLIVE
	---	---	696	PETROLIO PETROLEUM
	---	---	697	AVIO NAVY BLUE
	---	---	698	BLU NOTTE NIGHT BLUE
	---	---	699	OCRA OCHER
	---	---	700	MATTONE BRICK RED
	---	---	701	PRUGNA PLUM
	---	---	702	ROSSO RED
---	---	703	VINACCIO WINE RED	

CATEGORY	CODE	(*)	COLORE	COLOUR
CAT. G				
GO CHECK BY GABRIEL				
	---	---	736	GRIGIO GREY
	---	---	737	NERO BLACK
	---	---	738	BEIGE BEIGE
	---	---	739	FANGO MUD
	---	---	740	CACAO COCOA
	---	---	741	VERDE GREEN
	---	---	742	PRATO LAWN
	---	---	743	BOTTIGLIA BOTTLE
	---	---	744	AZZURRO AZURE
	---	---	745	TURCHESE TURQUOISE
	---	---	746	MARE SEA
	---	---	747	BLU BLUE
	---	---	748	GIALLO YELLOW
	---	---	749	ARANCIO ORANGE
	---	---	750	PESCA PEACH
	---	---	751	ROSSO RED
---	---	752	AMARANTO AMARANTH	

CATEGORY	CODE	(*)	COLORE	COLOUR
RUNNER BY GABRIEL				
	---	---	757	BIANCO WHITE
	---	---	758	ACCIAIO STEEL
	---	---	759	GRAFITE GRAPHITE
	---	---	760	NERO BLACK
	---	---	761	BEIGE BEIGE
	---	---	762	MARRONE BROWN
	---	---	763	VERDE GREEN
	---	---	764	PRATO LAWN
	---	---	765	TURCHESE TURQUOISE
	---	---	766	MARE SEA
	---	---	767	ARANCIO ORANGE
	---	---	768	ROSSO RED

CATEGORY	CODE	(*)	COLORE	COLOUR
CAT. I				
CRISP BY GABRIEL				
	---	---	841	GRIGIO CHIARO LIGHT GREY
	---	---	842	ANTRACITE ANTHRACITE
	---	---	843	AVORIO POLVERE POWDER IVORY
	---	---	844	TORTORA GREY BEIGE
	---	---	845	LIMO SILT GREEN
	---	---	846	SALVIA SAGE
	---	---	847	ACQUAMARINA ACQUAMARINE
	---	---	848	AVIO NAVY BLUE
	---	---	849	SENAPE MUSTARD
	---	---	850	CIPRIA POWDER PINK
---	---	851	VINACCIO WINE RED	

FINITURE E COLORI DISPONIBILI | FINISHES AND COLOURS AVAILABLE

Cat. B

CREPE



100% Poliestere FR-TREVIRA CS
Peso: 330 gr/m²
Martindale 100.000 cicli
Ignifugo classe 1

100% Polyester FR-TREVIRA CS
Weight: 330 gr/m²
Martindale 100.000 turns
Fire-retardant class 1 (one)



522 - Grigio perla
Light grey



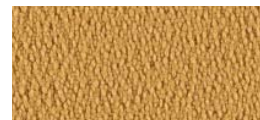
525 - Avorio
Ivory



528 - Verde acido
Acid green



530 - Artico
Arctic



534 - Giallo
Yellow



523 - Grigio scuro
Dark grey



526 - Nocciola
Hazel



529 - Petrolio
Petroleum



531 - Celeste
Light blue



535 - Arancio
Orange



524 - Nero
Black



527 - Malto
Malt



532 - Cobalto
Cobalt



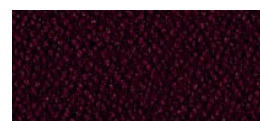
536 - Vinaccio
Wine red



533 - Blu
Blue



537 - Rosso
Red



538 - Prugna
Plum

IT

Il codice a tre cifre individua il colore della stoffa applicata nell'articolo / componente. Ogni partita di tessuto può presentare variazioni di tonalità rispetto sia al campionario sia ad elementi prodotti in tempi diversi.

EN

The three-digit code identifies the colour of the fabric for each item / component. Each fabric batch can show colour differences compared to the fabric samples and to the products manufactured at different times.

Leggere differenze di colore tra un lotto di produzione e l'altro, devono essere considerate nella norma. I colori stampati sono indicativi e potrebbero essere sostituiti o modificati nel tempo a discrezione di LAS.

Slight colour differences from lot to lot must be considered within commercial tolerances. Please consider that the colours in these pages are printed, so they can't be considered as real. They can be changed or modified in the life time by LAS.

Cat. D

STRETCH



100% Poliestere FR RICICLATO
Peso: 340 gr/m²
Martindale 50.000 cicli
Ignifugo classe 1

100% Polyester FR RECYCLED
Weight: 340 gr/m²
Martindale 50.000 turns
Fire-retardant class 1 (one)



585 - Avorio
Ivory



589 - Tortora
Grey beige



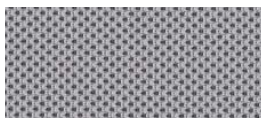
591 - Verde acido
Acid green



593 - Azzuro sky
Sky blue



595 - Giallo fresia
Freesia yellow



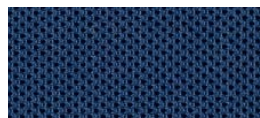
586 - Grigio
Grey



590 - Marrone
Brown



592 - Verde bosco
Wood green



594 - Blu
Blue



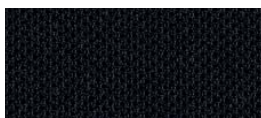
596 - Arancio
Orange



587 - Antracite
Anthracite



597 - Rosso
Red



588 - Nero
Black



598 - Amaranto
Amaranth

Cat. D

MELANGE



100% Poliestere FR RICICLATO
Peso: 340 gr/m²
Martindale 50.000 cicli
Ignifugo classe 1

100% Polyester FR RECYCLED
Weight: 340 gr/m²
Martindale 50.000 turns
Fire-retardant class 1 (one)



603 - Cenere
Ash



606 - Tortora
Grey beige



608 - Verde acido
Acid green



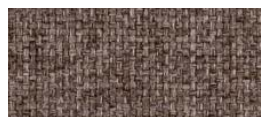
611 - Artico
Arctic



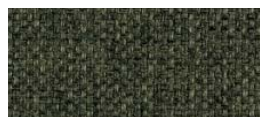
614 - Petunia
Petunia



604 - Grigio
Grey



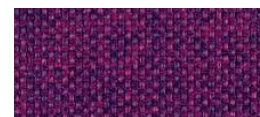
607 - Nocciola
Hazel



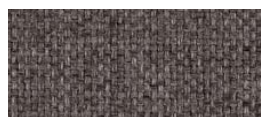
609 - Muschio
Moss green



612 - Azzurro
Azure



615 - Ribes
Currant



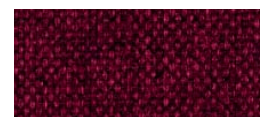
605 - Fumo
Smoke



610 - Verdone
Dark green



613 - Cobalto
Cobalt



616 - Granata
Garnet

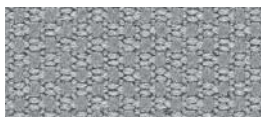
Cat. D

TREVI



100% Poliestere FR - TREVIRA CS
Peso: 450 gr/m²
Martindale 70.000 cicli
Ignifugo classe 1

100% Polyester FR - TREVIRA CS
Weight: 450 gr/m²
Martindale 70.000 turns
Fire-retardant class 1 (one)



621 - Grigio
Grey



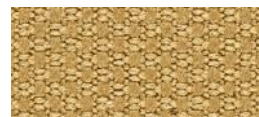
625 - Tortora
Grey beige



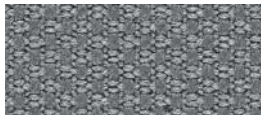
628 - Verde acido
Acid green



630 - Celeste
Light blue



633 - Ocra
Ocher



622 - Porfido
Porphyry



626 - Nocciola
Hazel



629 - Petrolio
Petroleum



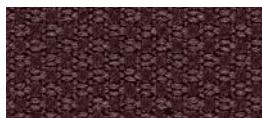
631 - Pervinca
Perwinkle



634 - Mattone
Brick red



623 - Grigio scuro
Dark grey



627 - Marrone
Brown



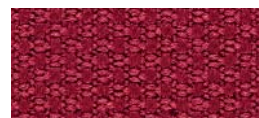
632 - Blu
Blue



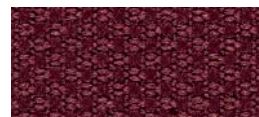
635 - Petunia
Petunia



624 - Nero
Black



636 - Rosso
Red



637 - Amaranto
Amaranth

Cat. E

LANA

75% Lana - 25% Poliammide
Peso: 335 gr/m²
Martindale 100.000 cicli

75% Wool - 25% Polyamide
Weight: 335 gr/m²
Martindale 100.000 turns



642 - Grigio chiaro
Light grey



645 - Tortora
Grey beige



647 - Verde acido
Acid green



649 - Artico
Arctic



653 - Ruggine
Russet



643 - Grigio scuro
Dark grey



646 - Marrone
Brown



648 - Muschio
Moss green



650 - Malibú
Malibu



654 - Mattone
Brick red



644 - Fumo
Smoke



651 - Pervinca
Periwinkle



655 - Fuoco
Fire red



652 - Avio
Navy blue

Cat. E

CHILI by Gabriel **NEW**



75% Poliestere riciclato post-consumo FR
25% Poliestere FR (FR all'interno della fibra)
Peso: 335 gr/m²
Martindale 60.000 cicli
Ignifugo classe 1

75% Post-consumer recycled Polyester FR
25% Polyester FR (FR inside the fiber)
Weight: 335 gr/m²
Martindale 60.000 turns
Fire-retardant class 1 (one)



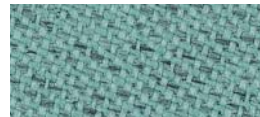
675 - Grigio chiaro
Light grey



677 - Avorio polvere
Powder ivory



679 - Salvia
Sage



681 - Acquamarina
Acquamarine



683 - Senape
Mustard



676 - Antracite
Anthracite



678 - Tortora
Grey beige



680 - Fieno
Hay



682 - Avio
Navy blue



684 - Cipria
Powder pink



685 - Vinaccio
Wine red

Cat. F

TAYLOR F.R. by Flukso

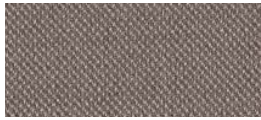


100% Poliestere
Peso: 330 gr/m²
Martindale 60.000 cicli
Ignifugo classe 1

100% Polyester
Weight: 330 gr/m²
Martindale 60.000 turns
Fire-retardant class 1 (one)



689 - Marna
Marl



693 - Tortora
Grey beige



695 - Oliva
Olive



697 - Avio
Navy blue



699 - Ocra
Ocher



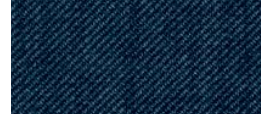
690 - Grigio scuro
Dark grey



694 - Tabacco
Tobacco



696 - Petrolio
Petroleum



698 - Blu notte
Night blue



700 - Mattone
Brick red



691 - Grafite
Graphite



701 - Prugna
Plum



692 - Nero
Black



702 - Rosso
Red



703 - Vinaccio
Wine red

Cat. G

GO CHECK by Gabriel

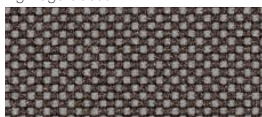


100% Trevira CS
Peso: 310 gr/m²
Martindale 80.000 cicli
Ignifugo classe 1

100% Trevira CS
Weight: 310 gr/m²
Martindale 80.000 turns
Fire-retardant class 1 (one)



736 - Grigio
Grey



738 - Beige
Beige



741 - Verde
Green



744 - Azzurro
Azure



748 - Giallo
Yellow



737 - Nero
Black



739 - Fango
Mud



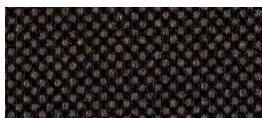
742 - Prato
Lawn



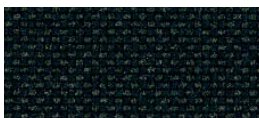
745 - Turchese
Turquoise



749 - Arancio
Orange



740 - Cacao
Cocoa



743 - Bottiglia
Bottle



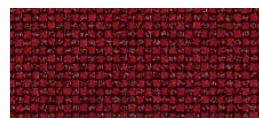
746 - Mare
Sea



750 - Pesca
Peach



747 - Blu
Blue



751 - Rosso
Red



752 - Amaranto
Amaranth

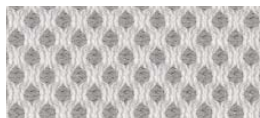
Cat. G

RUNNER by Gabriel

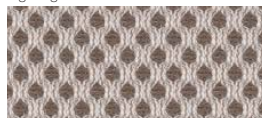


100% Poliestere
Peso: 319 gr/m²
Martindale 70.000 cicli
Ignifugo classe 1

100% Polyester
Weight: 319 gr/m²
Martindale 70.000 turns
Fire-retardant class 1 (one)



757 - Bianco
White



761 - Beige
Beige



763 - Verde
Green



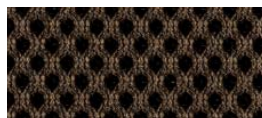
765 - Turchese
Turquoise



767 - Arancio
Orange



758 - Acciaio
Steel



762 - Marrone
Brown



764 - Prato
Lawn



766 - Mare
Sea



768 - Rosso
Red



759 - Grafite
Graphite



760 - Nero
Black

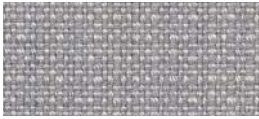
Cat. I

CRISP by Gabriel **NEW**



93% Lana Nuova Zelanda
7% Poliammide
Peso: 328 gr/m²
Martindale 200.000 cicli
Ignifugo classe 1

93% New Zeland Wool
7% Polyamide
Peso: 328 gr/m²
Martindale 200.000 turns
Fire-retardant class 1 (one)



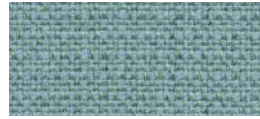
841 - Grigio chiaro
Light grey



843 - Avorio polvere
Powder ivory



845 - Limo
Silt green



847 - Acquamarina
Acquamarine



849 - Senape
Mustard



842 - Antracite
Anthracite



844 - Tortora
Grey beige



846 - Salvia
Sage



848 - Avio
Navy blue



850 - Cipria
Powder pink



851 - Vinaccio
Wine red